

**WINNEBAGO COUNTY, IOWA  
GPS CONTROL MONUMENT  
IOWA NORTH ZONE (1401)  
HORIZONTAL DATUM - NAD 83 (1996)  
VERTICAL DATUM - NAVD 1988**

GPS POINT NUMBER     **G149**

	US SURVEY FEET	METRIC
Northing:	4000250.732	1219278.862
Easting:	4921914.874	1500202.654
Elevation:	1303.436	397.288
Ellipsoid Height:	1206.959	367.882
Geoid 99 Height:	-96.477	-29.406

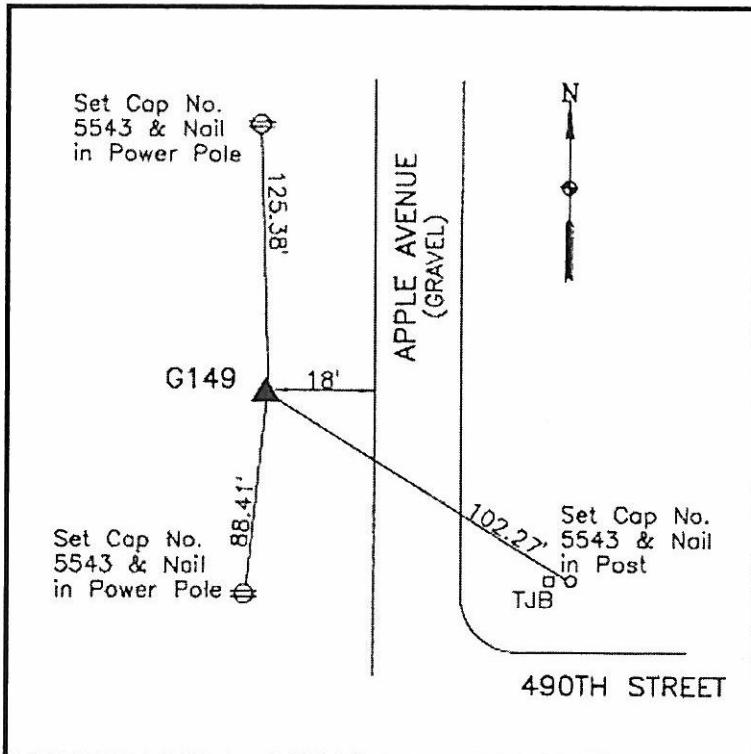
Latitude:	43°28'26.45223"N
Longitude:	93°29'50.98369"W
Scale Factor:	1.0000444840
Convergence:	0°00'06"
Combined Factor:	0.99998690

**Description:**

Placed 5/8" X 6' - 0" Long Aluminum Rod with Cap Stamped G149 and NGS Style Access Cover 1 " Deep.

**Location:**

West side Apple Avenue - 150'± north of 490th Street - near NE Corner Section 24-T100N-R23W.



**WHKS & CO.**