

**WINNEBAGO COUNTY, IOWA
GPS CONTROL MONUMENT
IOWA NORTH ZONE (1401)
HORIZONTAL DATUM - NAD 83 (1996)
VERTICAL DATUM - NAVD 1988**

GPS POINT NUMBER **G150**

	US SURVEY FEET	METRIC
Northing:	4009523.996	1222105.358
Easting:	4921303.552	1500016.323
Elevation:	1273.144	388.055
Ellipsoid Height:	1176.672	358.650
Geoid 99 Height:	-96.472	-29.405

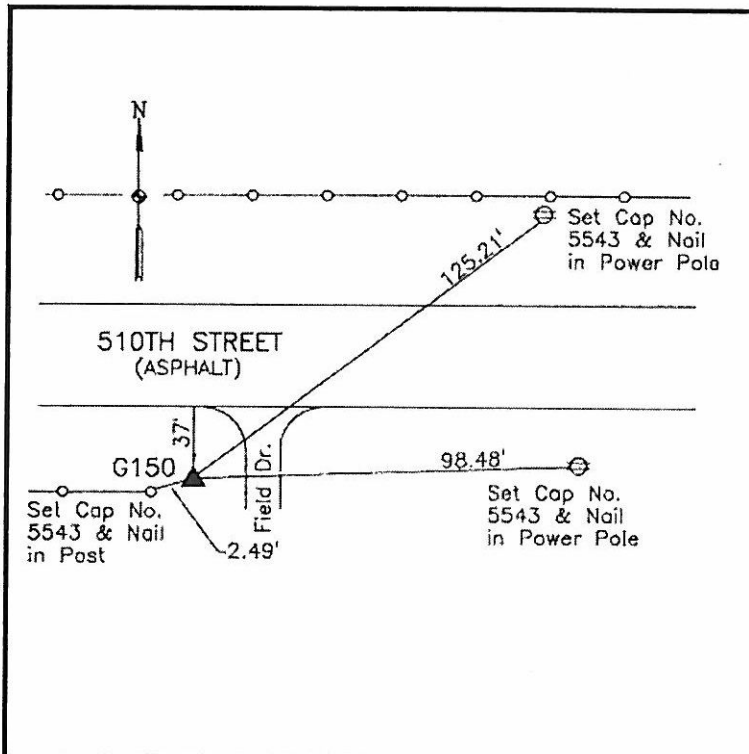
Latitude:	43°29'58.03378"N
Longitude:	93°29'59.27348"W
Scale Factor:	1.0000508518
Convergence:	0°00'00"
Combined Factor:	0.99999471

Description:

Placed 5/8" X 6' - 0" Long Aluminum Rod with Cap Stamped G150 and NGS Style Access Cover 2 " Deep.

Location:

On south side 510th Street (County Road A14) - 0.2± mile west of Apple Avenue - 2± east of end wood post - near NE Corner Section 12-T100N-R23W.



WHKS & CO.