

**WINNEBAGO COUNTY, IOWA
GPS CONTROL MONUMENT
IOWA NORTH ZONE (1401)
HORIZONTAL DATUM - NAD 83 (1996)
VERTICAL DATUM - NAVD 1988**

GPS POINT NUMBER **G151**

	US SURVEY FEET	METRIC
Northing:	4009554.059	1222114.521
Easting:	4906168.138	1495403.039
Elevation:	1236.602	376.917
Ellipsoid Height:	1140.108	347.506
Geoid 99 Height:	-96.494	-29.412

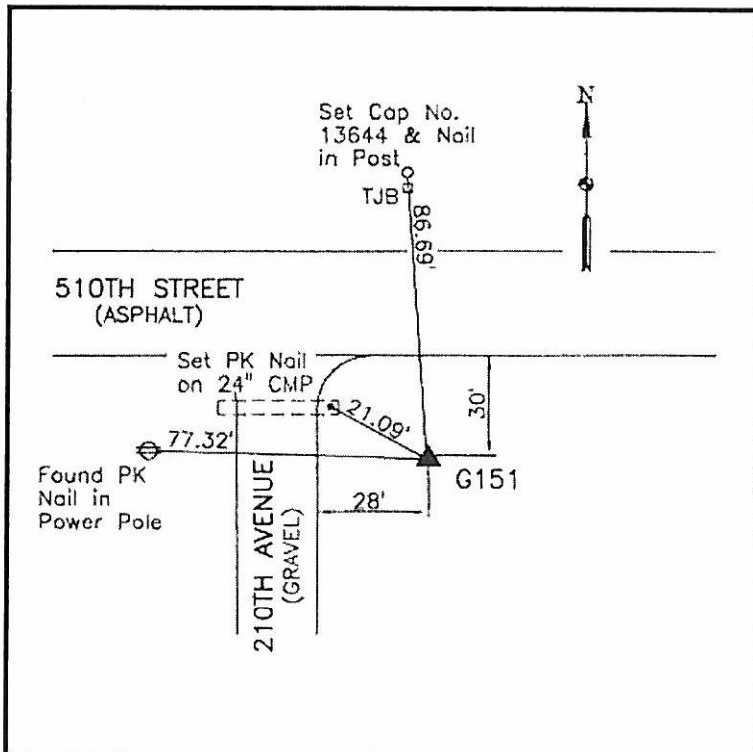
Latitude:	43°29'58.28060"N
Longitude:	93°33'24.60889"W
Scale Factor:	1.0000508692
Convergence:	-0°02'19"
Combined Factor:	0.99999647

Description:

Placed 5/8" X 6' - 0" Long Aluminum Rod with Cap Stamped G151 and NGS Style Access Cover 3 " Deep.

Location:

SE Corner of 510th Street (County Road A14) and 210th Avenue - near NW Corner Section 10-T100N-R23W.



WHKS & CO.