

**WINNEBAGO COUNTY, IOWA  
GPS CONTROL MONUMENT  
IOWA NORTH ZONE (1401)  
HORIZONTAL DATUM - NAD 83 (1996)  
VERTICAL DATUM - NAVD 1988**

GPS POINT NUMBER **G152**

	US SURVEY FEET	METRIC
Northing:	4009590.981	1222125.775
Easting:	4889758.018	1490401.225
Elevation:	1286.805	392.219
Ellipsoid Height:	1190.430	362.844
Geoid 99 Height:	-96.375	-29.375

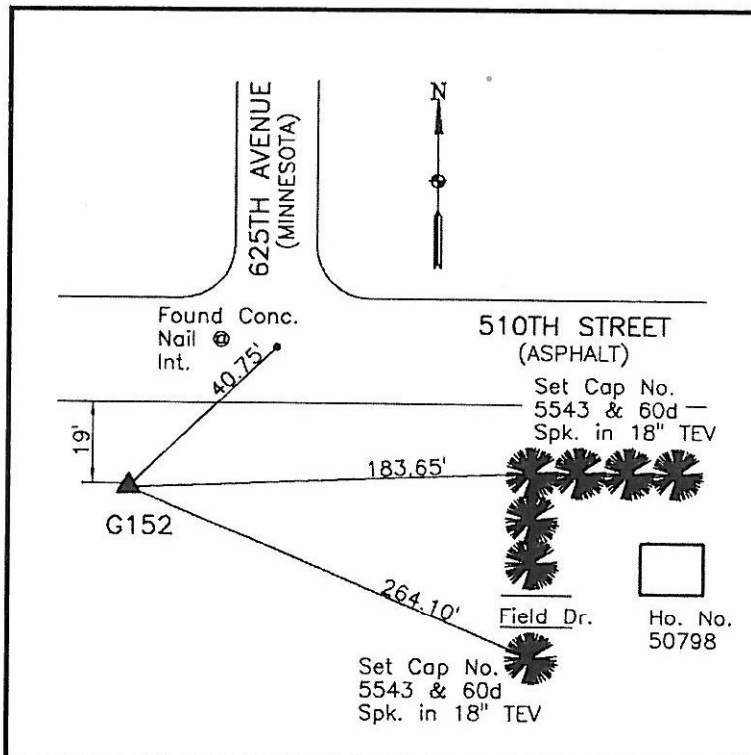
Latitude:	43°29'58.47701"N
Longitude:	93°37'07.23816"W
Scale Factor:	1.0000508831
Convergence:	-0°04'50"
Combined Factor:	0.99999409

**Description:**

Placed 5/8" X 6' - 0" Long Aluminum Rod with Cap Stamped G152 and NGS Style Access Cover 1" Deep.

**Location:**

On south side 510th Street - 300'± west of 180th Avenue (County Road R60) - near NW Corner - Section 7-T100N-R23W.



**WHKS & CO.**