

**WINNEBAGO COUNTY, IOWA  
GPS CONTROL MONUMENT  
IOWA NORTH ZONE (1401)  
HORIZONTAL DATUM - NAD 83 (1996)  
VERTICAL DATUM - NAVD 1988**

GPS POINT NUMBER      **G153**

|                   | US SURVEY FEET | METRIC      |
|-------------------|----------------|-------------|
| Northing:         | 4009567.434    | 1222118.598 |
| Easting:          | 4874491.426    | 1485747.958 |
| Elevation:        | 1260.563       | 384.220     |
| Ellipsoid Height: | 1164.387       | 354.906     |
| Geoid 99 Height:  | -96.177        | -29.315     |

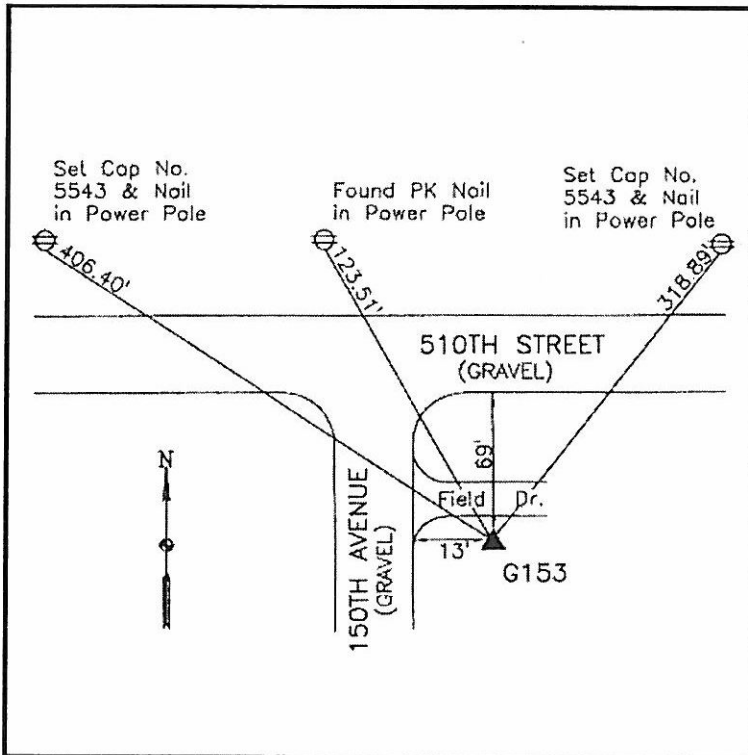
|                  |                  |
|------------------|------------------|
| Latitude:        | 43°29'57.98151"N |
| Longitude:       | 93°40'34.35226"W |
| Scale Factor:    | 1.0000508481     |
| Convergence:     | -0°07'10"        |
| Combined Factor: | 0.99999529       |

**Description:**

Placed 5/8" X 6' - 0" Long Aluminum Rod with Cap Stamped G153 and NGS Style Access Cover 2 " Deep.

**Location:**

SE Corner of 510th Street and 150th Avenue - near NW Corner Section 10-T100N-R24W.



**WHKS & CO.**