

**WINNEBAGO COUNTY, IOWA
GPS CONTROL MONUMENT
IOWA NORTH ZONE (1401)
HORIZONTAL DATUM - NAD 83 (1996)
VERTICAL DATUM - NAVD 1988**

GPS POINT NUMBER **G154**

	US SURVEY FEET	METRIC
Northing:	4009617.640	1222133.901
Easting:	4859142.095	1481069.473
Elevation:	1242.373	378.676
Ellipsoid Height:	1146.454	349.440
Geoid 99 Height:	-95.919	-29.236

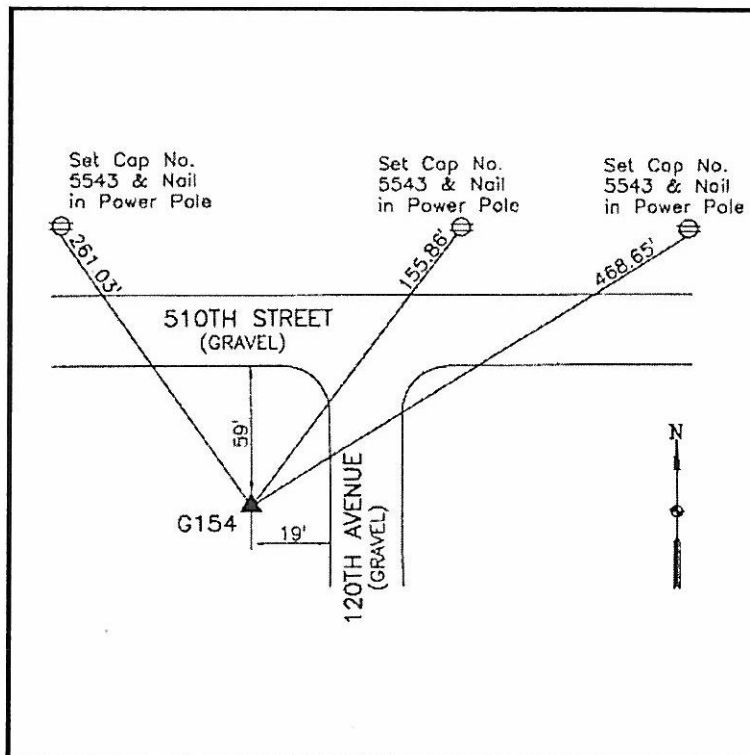
Latitude:	43°29'58.10951"N
Longitude:	93°44'02.59060"W
Scale Factor:	1.0000508572
Convergence:	-0°09'31"
Combined Factor:	0.99999616

Description:

Placed 5/8" X 6' - 0" Long Aluminum Rod with Cap Stamped G154 and NGS Style Access Cover 1" Deep.

Location:

SW Corner of 510th Street and 120th Avenue - near NW Corner Section 7-T100N-R24W.



WHKS & CO.