

**WINNEBAGO COUNTY, IOWA
GPS CONTROL MONUMENT
IOWA NORTH ZONE (1401)
HORIZONTAL DATUM - NAD 83 (1996)
VERTICAL DATUM - NAVD 1988**

GPS POINT NUMBER **G155**

	US SURVEY FEET	METRIC
Northing:	4009621.512	1222135.081
Easting:	4843085.160	1476175.309
Elevation:	1224.181	373.131
Ellipsoid Height:	1128.619	344.004
Geoid 99 Height:	-95.562	-29.127

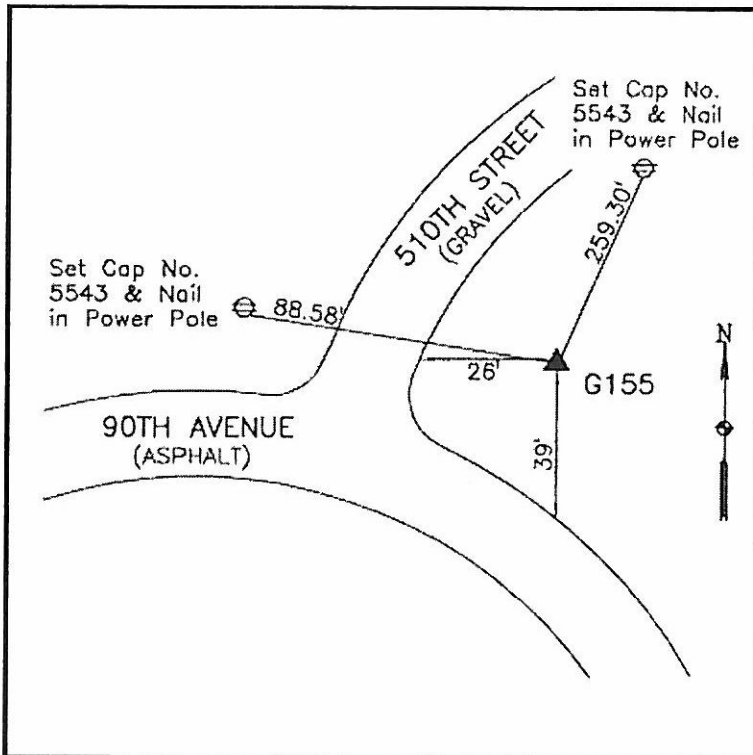
Latitude:	43°29'57.65197"N
Longitude:	93°47'40.42657"W
Scale Factor:	1.0000508249
Convergence:	-0°11'59"
Combined Factor:	0.99999698

Description:

Placed 5/8" X 6' - 0" Long Aluminum Rod with Cap Stamped G155 and NGS Style Access Cover 2 " Deep.

Location:

NE Corner at 510th Street and 90th Avenue - 5'± south of street sign - near NW Corner Section 10-T100N-R25W.



WHKS & CO.