

**WINNEBAGO COUNTY, IOWA
GPS CONTROL MONUMENT
IOWA NORTH ZONE (1401)
HORIZONTAL DATUM - NAD 83 (1996)
VERTICAL DATUM - NAVD 1988**

GPS POINT NUMBER **G156**

| | US SURVEY FEET | METRIC |
|-------------------|----------------|-------------|
| Northing: | 4009778.732 | 1222183.002 |
| Easting: | 4827747.629 | 1471500.420 |
| Elevation: | 1181.190 | 360.027 |
| Ellipsoid Height: | 1086.067 | 331.034 |
| Geoid 99 Height: | -95.123 | -28.994 |

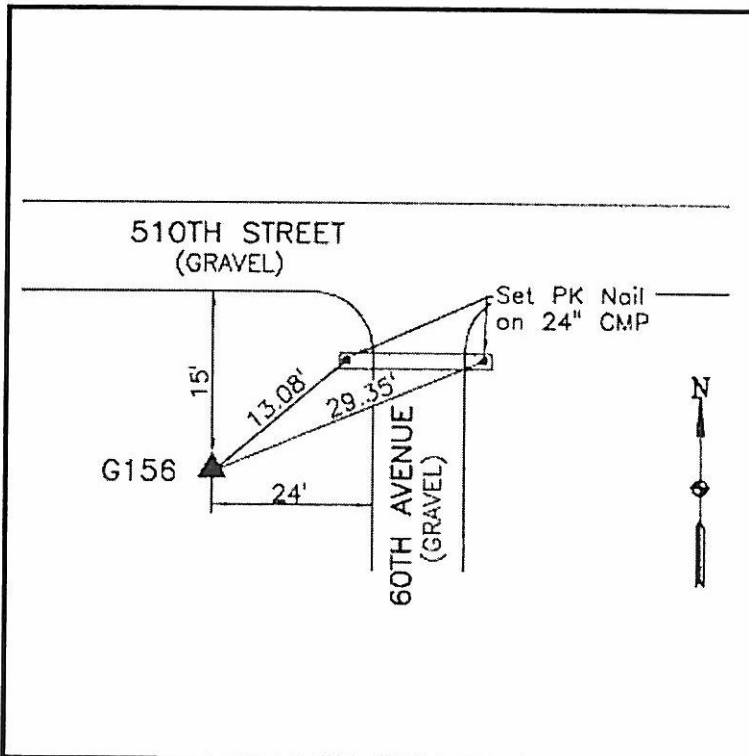
| | |
|------------------|------------------|
| Latitude: | 43°29'58.62508"N |
| Longitude: | 93°51'08.51050"W |
| Scale Factor: | 1.0000508936 |
| Convergence: | -0°14'20" |
| Combined Factor: | 0.99999907 |

Description:

Placed 5/8" X 6' - 0" Long Aluminum Rod with Cap Stamped G156 and NGS Style Access Cover 1 " Deep.

Location:

SW Corner of 510th Street and 60th Avenue - near NW Corner of Section 7-T100N-R25W.



WHKS & CO.