

**WINNEBAGO COUNTY, IOWA  
GPS CONTROL MONUMENT  
IOWA NORTH ZONE (1401)  
HORIZONTAL DATUM - NAD 83 (1996)  
VERTICAL DATUM - NAVD 1988**

GPS POINT NUMBER **G157**

	US SURVEY FEET	METRIC
Northing:	4009846.480	1222203.651
Easting:	4811909.473	1466672.941
Elevation:	1141.810	348.024
Ellipsoid Height:	1047.233	319.197
Geoid 99 Height:	-94.578	-28.827

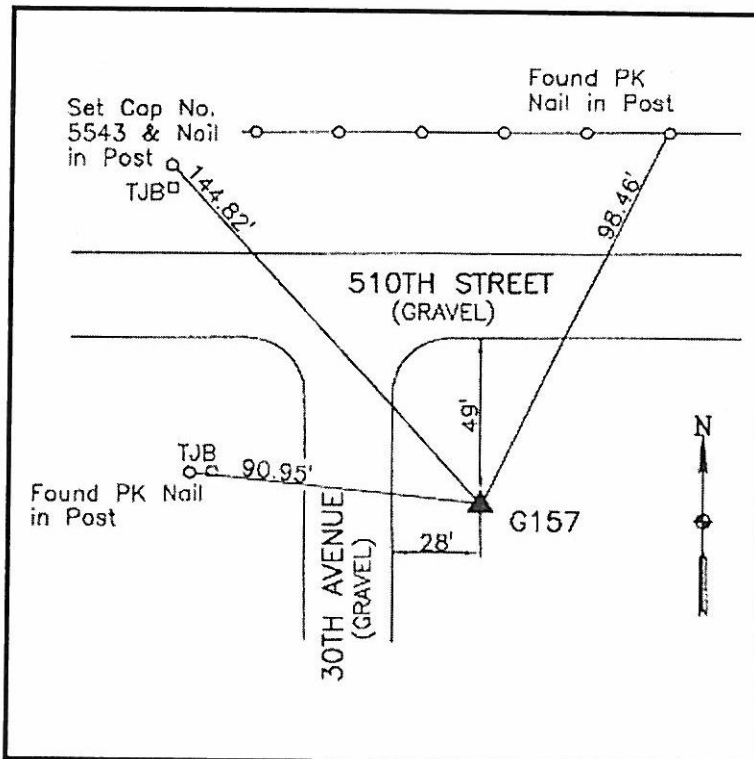
Latitude:	43°29'58.58697"N
Longitude:	93°54'43.38197"W
Scale Factor:	1.0000508909
Convergence:	-0°16'45"
Combined Factor:	1.00000092

**Description:**

Placed 5/8" X 6' - 0" Long Aluminum Rod with Cap Stamped G157 and NGS Style Access Cover 3 " Deep.

**Location:**

SE Corner of 510th Street and 30th Avenue - near NW Corner Section 10-T100N-R26W.



**WHKS & CO.**