

**WINNEBAGO COUNTY, IOWA
GPS CONTROL MONUMENT
IOWA NORTH ZONE (1401)
HORIZONTAL DATUM - NAD 83 (1996)
VERTICAL DATUM - NAVD 1988**

GPS POINT NUMBER **G158**

	US SURVEY FEET	METRIC
Northing:	4009983.404	1222245.386
Easting:	4796480.590	1461970.208
Elevation:	1136.475	346.398
Ellipsoid Height:	1042.440	317.736
Geoid 99 Height:	-94.036	-28.662

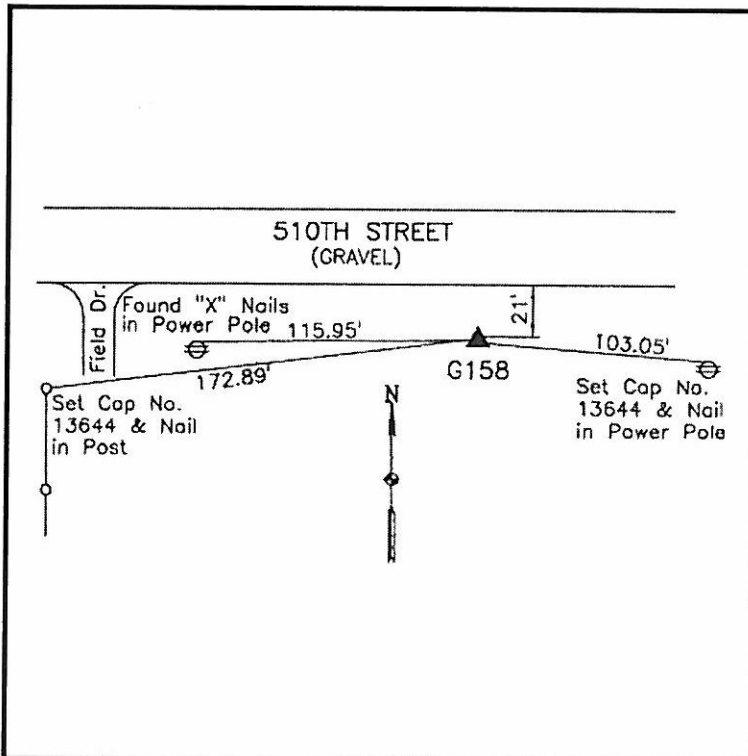
Latitude:	43°29'59.14412"N
Longitude:	93°58'12.70611"W
Scale Factor:	1.0000509302
Convergence:	-0°19'07"
Combined Factor:	1.00000119

Description:

Placed 5/8" X 6' - 0" Long Aluminum Rod with Cap Stamped G158 and NGS Style Access Cover 3 " Deep.

Location:

On south side 510th Street - 150'± east of Section line fence - near NW Corner Section 7-T100N-R26W.



WHKS & CO.