

2014 Winneshiek County, Iowa
Horizontal Datum: **NAD 83(2011)** - Vertical Datum: **NAVD 1988**
Iowa North Zone (1401)
Iowa Regional Coordinate System Zone 2 Mason City
US Survey Feet

Point Name: **10101**

NAD 83(2011) Latitude: **N43°30'02.77143"** Longitude: **W92°04'36.63837"**

NAVD 88 Ortho Height: **1230.490sft** Ellip. Ht: **1131.009sft** **Geoid12A**

Mapping Angle: **0°57'52"** Combination Scale Factor: **0.9999972236**

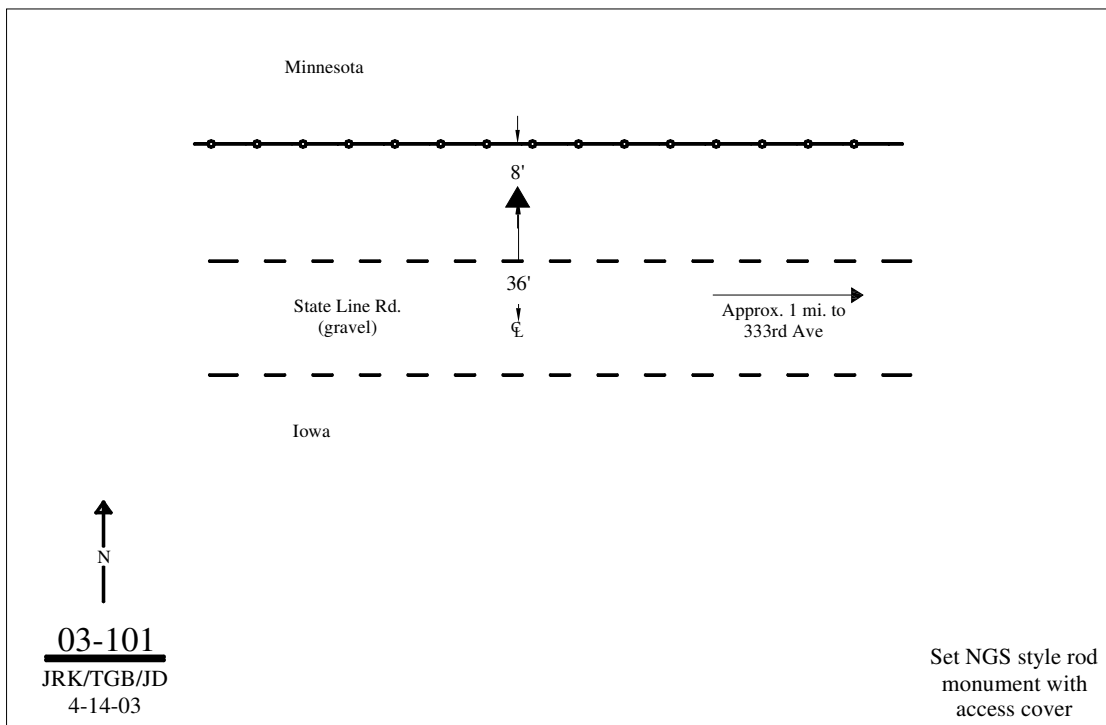
Iowa North Zone (1401) Northing: **4013182.293sft** Easting: **5298871.040sft**

IaRCS Zone 2 Northing: **9922503.753sft** Easting: **12678623.688sft**

Location: Near the S 1/4 Cor of Sec 31 T101N R10W.

Designation: WINNESHIEK COUNTY GPS CONTROL PT 2003-101

Monument Type: 5/8" dia driven aluminum rod with a 2-1/2" dia aluminum cap and permanent magnet encased in a 5" dia PVC pipe with an aluminum access cover.



This document was prepared by DCI on February 7, 2014 for use by Winneshiek County, Iowa