

2014 Winneshiek County, Iowa
Horizontal Datum: **NAD 83(2011)** - Vertical Datum: **NAVD 1988**
Iowa North Zone (1401)
Iowa Regional Coordinate System Zone 2 Mason City
US Survey Feet

Point Name: **10102**

NAD 83(2011) Latitude: **N43°30'01.89038"** Longitude: **W92°01'51.81282"**

NAVD 88 Ortho Height: **1209.160sft** Ellip. Ht: **1109.824sft** **Geoid12A**

Mapping Angle: **0°59'44"** Combination Scale Factor: **0.9999981720**

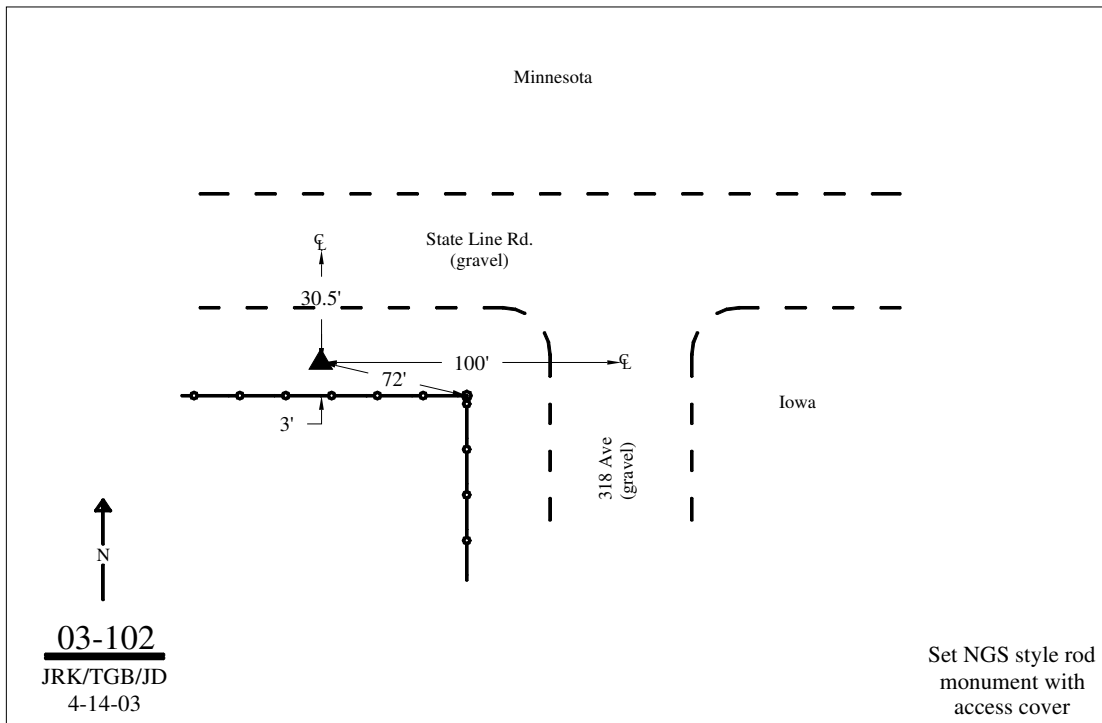
Iowa North Zone (1401) Northing: **4013300.897sft** Easting: **5311019.972sft**

IaRCS Zone 2 Northing: **9922515.514sft** Easting: **12690773.300sft**

Location: Near the NE Cor of Sec 9 T100N R10W.

Designation: WINNESHIEK COUNTY GPS CONTROL PT 2003-102

Monument Type: 5/8" dia driven aluminum rod with a 2-1/2" dia aluminum cap and permanent magnet encased in a 5" dia PVC pipe with an aluminum access cover.



This document was prepared by DCI on February 7, 2014 for use by Winneshiek County, Iowa