

2014 Winneshiek County, Iowa
Horizontal Datum: **NAD 83(2011)** - Vertical Datum: **NAVD 1988**
Iowa North Zone (1401)
Iowa Regional Coordinate System Zone 2 Mason City
US Survey Feet

Point Name: **10103**

NAD 83(2011) Latitude: **N43°30'02.73308"** Longitude: **W91°58'14.52467"**

NAVD 88 Ortho Height: **1274.080sft** Ellip. Ht: **1174.959sft** **Geoid12A**

Mapping Angle: **1°02'11"** Combination Scale Factor: **0.9999951240**

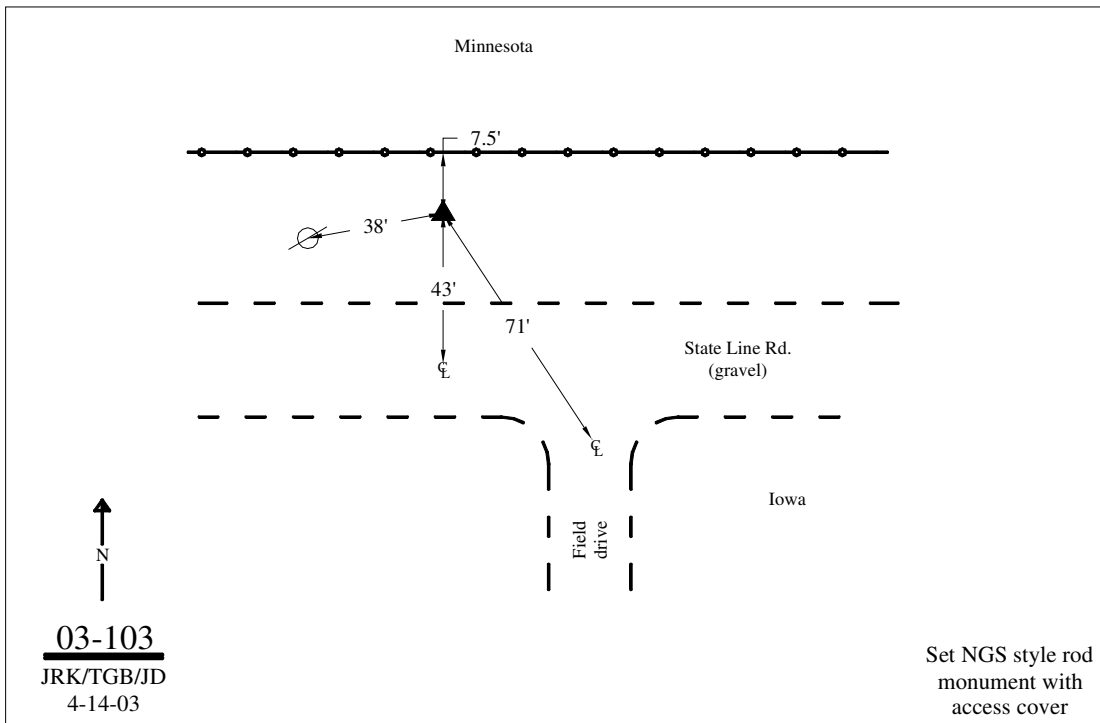
Iowa North Zone (1401) Northing: **4013670.211sft** Easting: **5327032.109sft**

IaRCS Zone 2 Northing: **9922744.099sft** Easting: **12706788.206sft**

Location: Near the SE Cor of Sec 36 T101N R10W.

Designation: WINNESHIEK COUNTY GPS CONTROL PT 2003-103

Monument Type: 5/8" dia driven aluminum rod with a 2-1/2" dia aluminum cap and permanent magnet encased in a 5" dia PVC pipe with an aluminum access cover.



This document was prepared by DCI on February 7, 2014 for use by Winneshiek County, Iowa