

2014 Winneshiek County, Iowa
Horizontal Datum: **NAD 83(2011)** - Vertical Datum: **NAVD 1988**
Iowa North Zone (1401)
Iowa Regional Coordinate System Zone 2 Mason City
US Survey Feet

Point Name: **10104**

NAD 83(2011) Latitude: **N43°30'02.51997"** Longitude: **W91°54'37.79993"**

NAVD 88 Ortho Height: **1306.060sft** Ellip. Ht: **1207.114sft** **Geoid12A**

Mapping Angle: **1°04'38"** Combination Scale Factor: **0.9999935748**

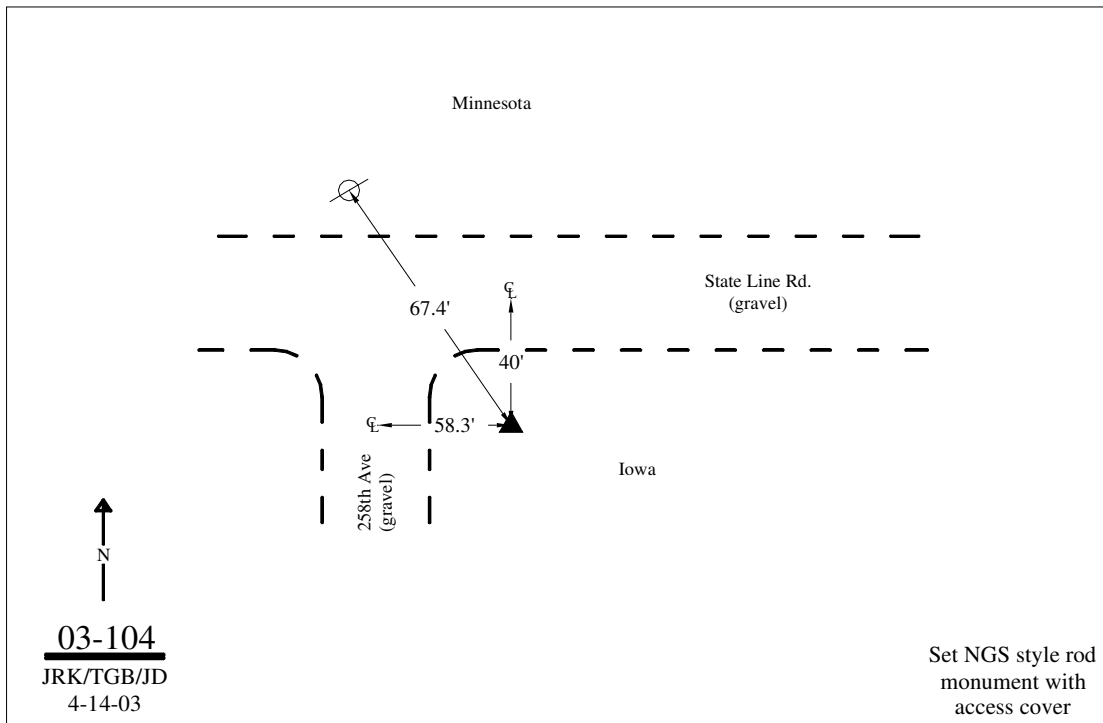
Iowa North Zone (1401) Northing: **4013943.286sft** Easting: **5343004.406sft**

IaRCS Zone 2 Northing: **9922876.905sft** Easting: **12722762.425sft**

Location: Near the NW Cor of Sec 10 T100N R9W.

Designation: WINNESHIEK COUNTY GPS CONTROL PT 2003-104

Monument Type: 5/8" dia driven aluminum rod with a 2-1/2" dia aluminum cap and permanent magnet encased in a 5" dia PVC pipe with an aluminum access cover.



This document was prepared by DCI on February 7, 2014 for use by Winneshiek County, Iowa