

2014 Winneshiek County, Iowa
Horizontal Datum: **NAD 83(2011)** - Vertical Datum: **NAVD 1988**
Iowa North Zone (1401)
Iowa Regional Coordinate System Zone 2 Mason City
US Survey Feet

Point Name: **10106**

NAD 83(2011) Latitude: **N43°29'59.27013"** Longitude: **W91°47'28.06765"**

NAVD 88 Ortho Height: **1268.120sft** Ellip. Ht: **1169.184sft** **Geoid12A**

Mapping Angle: **1°09'29"** Combination Scale Factor: **0.9999951547**

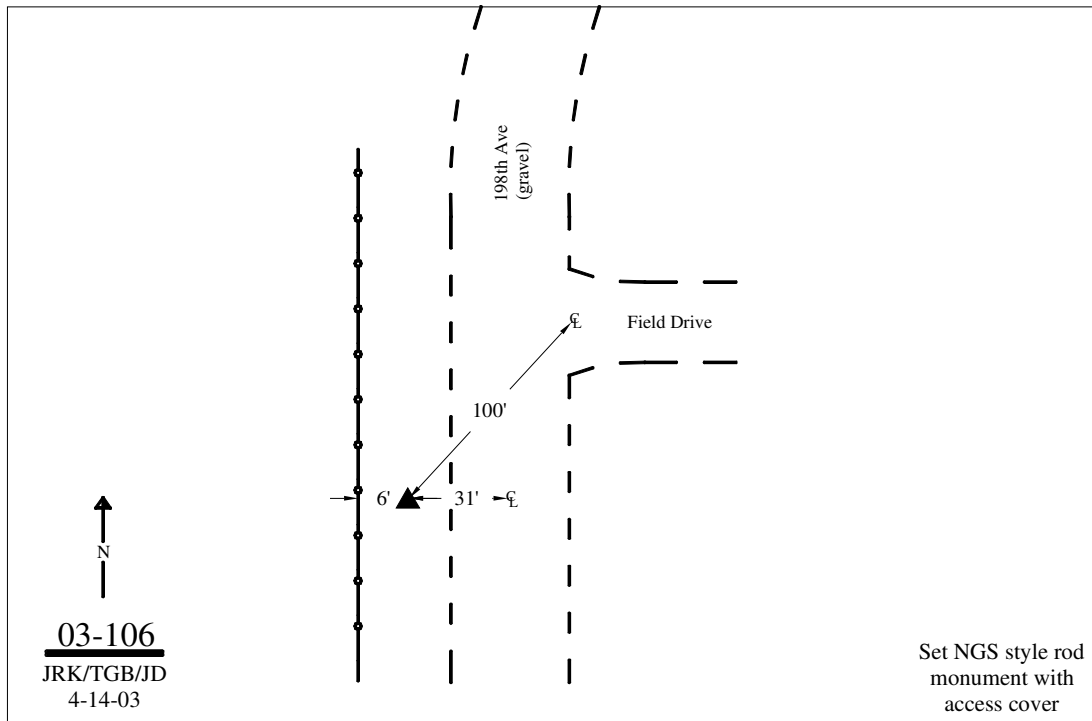
Iowa North Zone (1401) Northing: **4014232.164sft** Easting: **5374680.285sft**

IaRCS Zone 2 Northing: **9922887.929sft** Easting: **12754439.901sft**

Location: Near the NE Cor of Sec 9 T100N R8W.

Designation: WINNESHIEK COUNTY GPS CONTROL PT 2003-106

Monument Type: 5/8" dia driven aluminum rod with a 2-1/2" dia aluminum cap and permanent magnet encased in a 5" dia PVC pipe with an aluminum access cover.



This document was prepared by DCI on February 7, 2014 for use by Winneshiek County, Iowa