

2014 Winneshiek County, Iowa
Horizontal Datum: **NAD 83(2011)** - Vertical Datum: **NAVD 1988**
Iowa North Zone (1401)
Iowa Regional Coordinate System Zone 2 Mason City
US Survey Feet

Point Name: **10107**

NAD 83(2011) Latitude: **N43°30'02.96008"** Longitude: **W91°43'48.23167"**

NAVD 88 Ortho Height: **1184.340sft** Ellip. Ht: **1085.207sft** **Geoid12A**

Mapping Angle: **1°11'58"** Combination Scale Factor: **0.9999994221**

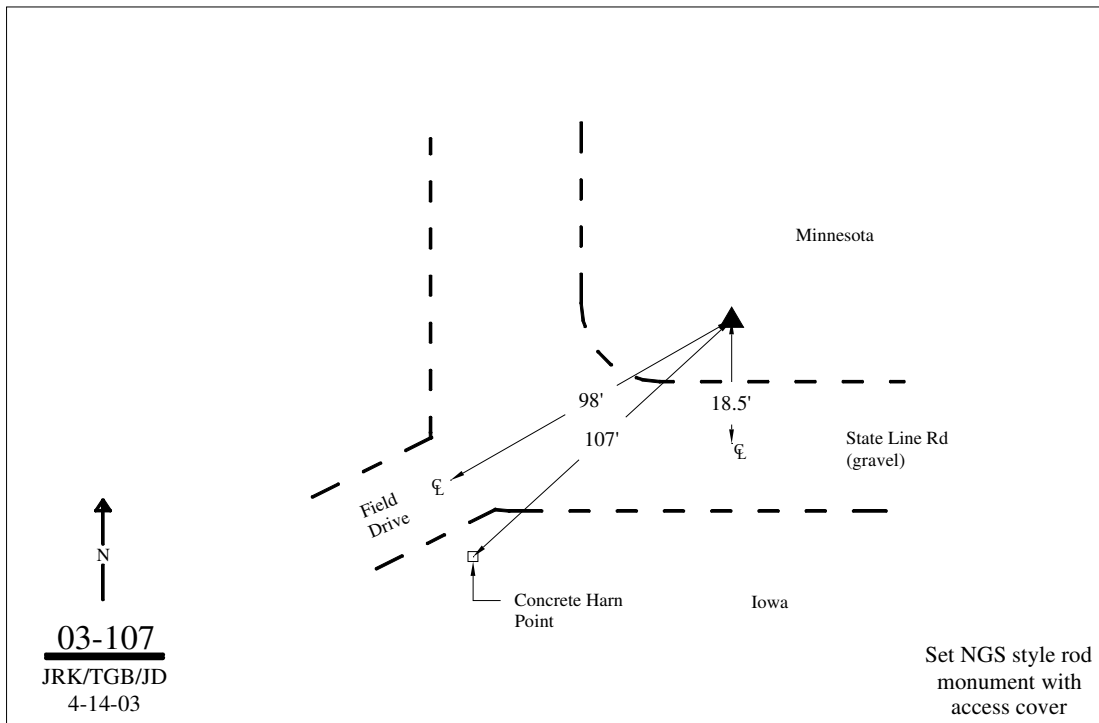
Iowa North Zone (1401) Northing: **4014939.098sft** Easting: **5390873.224sft**

IaRCS Zone 2 Northing: **9923452.968sft** Easting: **12770638.554sft**

Location: Near the SW Cor of Sec 31 T101N R7W.

Designation: WINNESHIEK COUNTY GPS CONTROL PT 2003-107

Monument Type: 5/8" dia driven aluminum rod with a 2-1/2" dia aluminum cap and permanent magnet encased in a 5" dia PVC pipe with an aluminum access cover.



This document was prepared by DCI on February 7, 2014 for use by Winneshiek County, Iowa