

2014 Winneshiek County, Iowa
Horizontal Datum: **NAD 83(2011)** - Vertical Datum: **NAVD 1988**
Iowa North Zone (1401)
Iowa Regional Coordinate System Zone 2 Mason City
US Survey Feet

Point Name: **10110**

NAD 83(2011) Latitude: **N43°28'20.06192"** Longitude: **W91°58'12.13748"**

NAVD 88 Ortho Height: **1178.570sft** Ellip. Ht: **1079.409sft** **Geoid12A**

Mapping Angle: **1°02'13"** Combination Scale Factor: **0.9999925460**

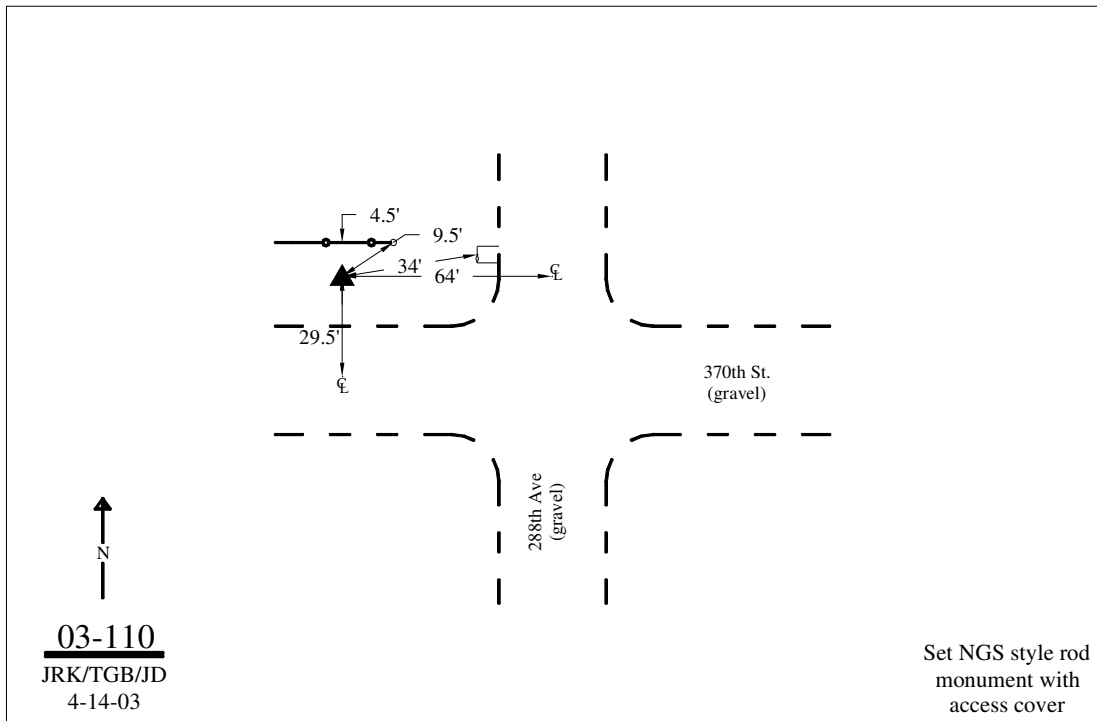
Iowa North Zone (1401) Northing: **4003278.923sft** Easting: **5327396.175sft**

IaRCS Zone 2 Northing: **9912349.900sft** Easting: **12707060.975sft**

Location: Near the NE Cor of Sec 24 T100N R10W.

Designation: WINNESHIEK COUNTY GPS CONTROL PT 2003-110

Monument Type: 5/8" dia driven aluminum rod with a 2-1/2" dia aluminum cap and permanent magnet encased in a 5" dia PVC pipe with an aluminum access cover.



This document was prepared by DCI on February 7, 2014 for use by Winneshiek County, Iowa