

2014 Winneshiek County, Iowa
Horizontal Datum: **NAD 83(2011)** - Vertical Datum: **NAVD 1988**
Iowa North Zone (1401)
Iowa Regional Coordinate System Zone 2 Mason City
US Survey Feet

Point Name: **10111**

NAD 83(2011) Latitude: **N43°28'20.25042"** Longitude: **W91°54'35.58863"**

NAVD 88 Ortho Height: **1242.470sft** Ellip. Ht: **1143.464sft** **Geoid12A**

Mapping Angle: **1°04'40"** Combination Scale Factor: **0.9999895029**

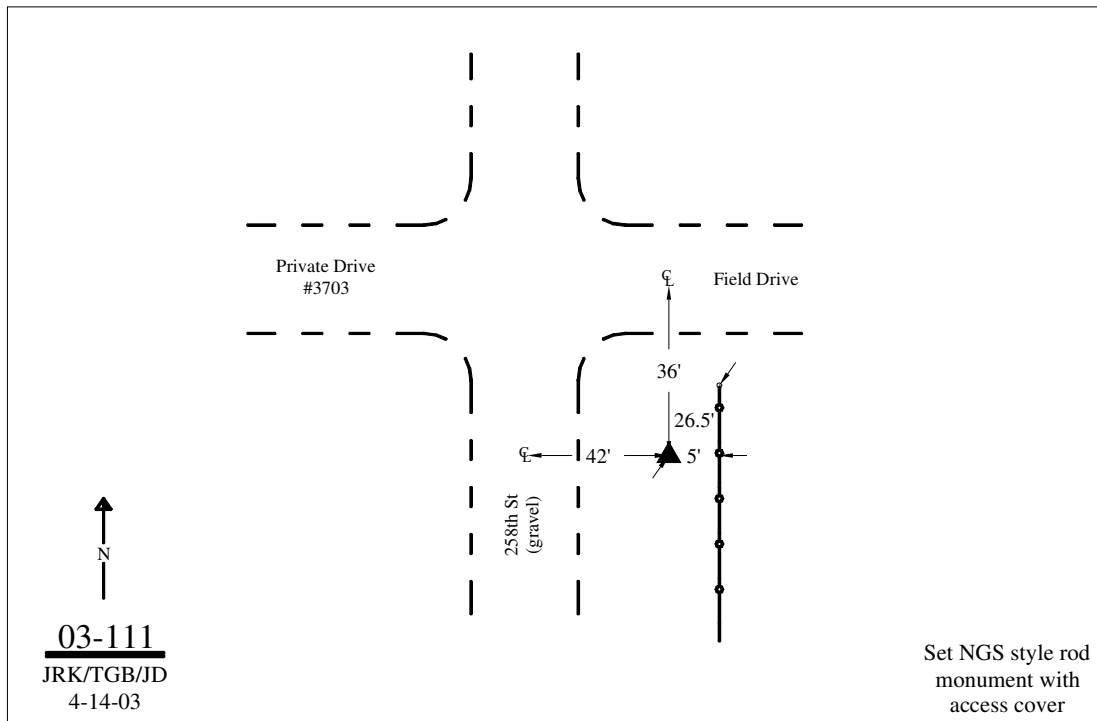
Iowa North Zone (1401) Northing: **4003592.674sft** Easting: **5343362.138sft**

IaRCS Zone 2 Northing: **9912523.438sft** Easting: **12723029.288sft**

Location: Near the SW Cor of Sec 15 T100N R9W.

Designation: WINNESHIEK COUNTY GPS CONTROL PT 2003-111

Monument Type: 5/8" dia driven aluminum rod with a 2-1/2" dia aluminum cap and permanent magnet encased in a 5" dia PVC pipe with an aluminum access cover.



This document was prepared by DCI on February 7, 2014 for use by Winneshiek County, Iowa