

2014 Winneshiek County, Iowa
Horizontal Datum: **NAD 83(2011)** - Vertical Datum: **NAVD 1988**
Iowa North Zone (1401)
Iowa Regional Coordinate System Zone 2 Mason City
US Survey Feet

Point Name: **10112**

NAD 83(2011) Latitude: **N43°28'20.25559"** Longitude: **W91°51'00.91302"**

NAVD 88 Ortho Height: **1263.970sft** Ellip. Ht: **1165.039sft** **Geoid12A**

Mapping Angle: **1°07'05"** Combination Scale Factor: **0.9999884739**

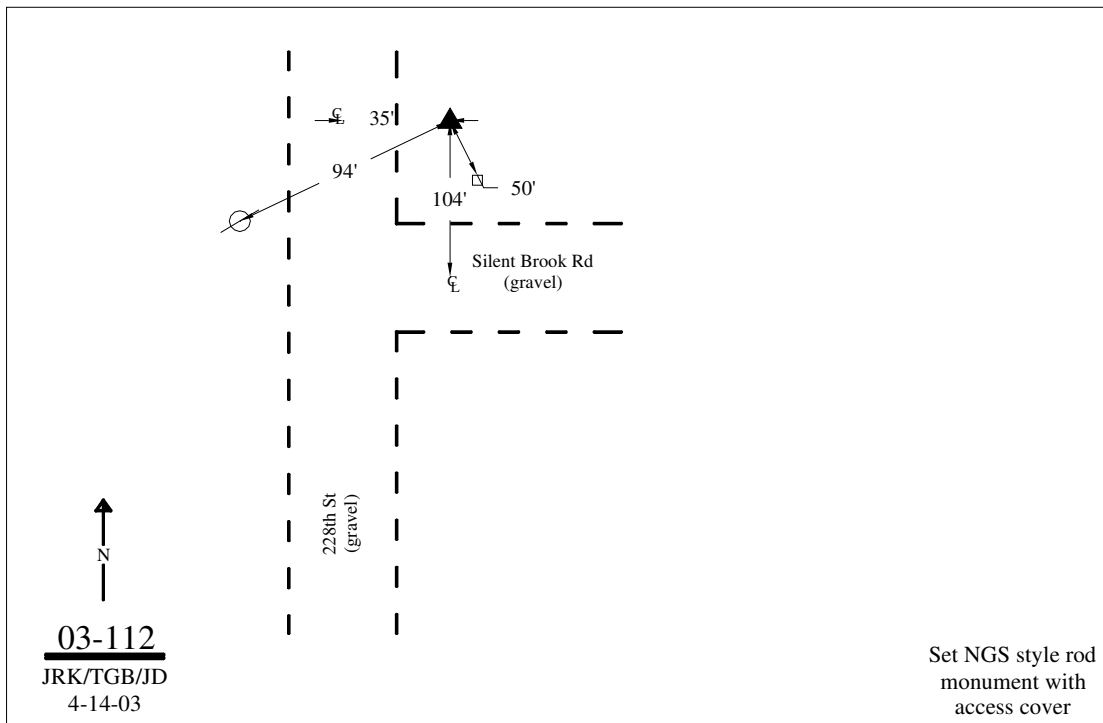
Iowa North Zone (1401) Northing: **4003896.530sft** Easting: **5359190.112sft**

IaRCS Zone 2 Northing: **9912688.399sft** Easting: **12738859.527sft**

Location: Near the SW Cor of Sec 18 T100N R8W.

Designation: WINNESHIEK COUNTY GPS CONTROL PT 2003-112

Monument Type: 5/8" dia driven aluminum rod with a 2-1/2" dia aluminum cap and permanent magnet encased in a 5" dia PVC pipe with an aluminum access cover.



This document was prepared by DCI on February 7, 2014 for use by Winneshiek County, Iowa