

2014 Winneshiek County, Iowa
Horizontal Datum: **NAD 83(2011)** - Vertical Datum: **NAVD 1988**
Iowa North Zone (1401)
Iowa Regional Coordinate System Zone 2 Mason City
US Survey Feet

Point Name: **10113**

NAD 83(2011) Latitude: **N43°28'21.83379"** Longitude: **W91°47'25.88886"**

NAVD 88 Ortho Height: **1274.360sft** Ellip. Ht: **1175.399sft** **Geoid12A**

Mapping Angle: **1°09'31"** Combination Scale Factor: **0.9999880875**

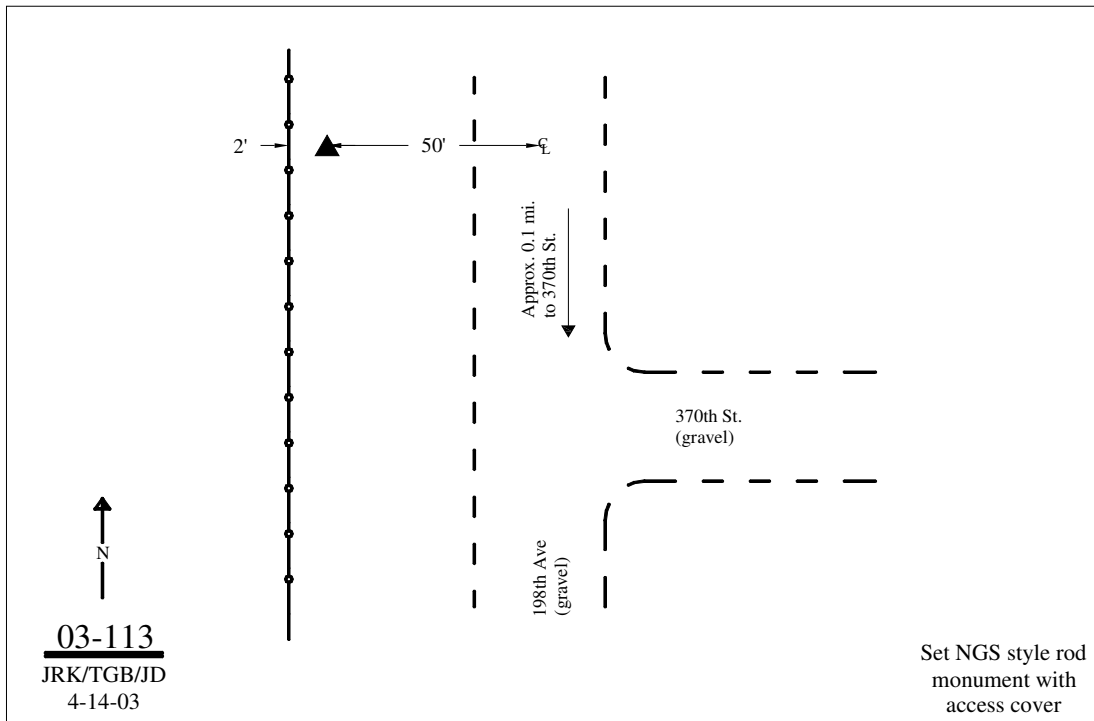
Iowa North Zone (1401) Northing: **4004371.317sft** Easting: **5375040.343sft**

IaRCS Zone 2 Northing: **9913024.196sft** Easting: **12754713.519sft**

Location: Near the SE Cor of Sec 16 T100N R8W.

Designation: WINNESHIEK COUNTY GPS CONTROL PT 2003-113

Monument Type: 5/8" dia driven aluminum rod with a 2-1/2" dia aluminum cap and permanent magnet encased in a 5" dia PVC pipe with an aluminum access cover.



This document was prepared by DCI on February 7, 2014 for use by Winneshiek County, Iowa