

2014 Winneshiek County, Iowa
Horizontal Datum: **NAD 83(2011)** - Vertical Datum: **NAVD 1988**
Iowa North Zone (1401)
Iowa Regional Coordinate System Zone 2 Mason City
US Survey Feet

Point Name: **10117**

NAD 83(2011) Latitude: **N43°25'42.87610"** Longitude: **W92°00'09.12580"**

NAVD 88 Ortho Height: **1030.770sft** Ellip. Ht: **931.479sft** **Geoid12A**

Mapping Angle: **1°00'54"** Combination Scale Factor: **0.9999891627**

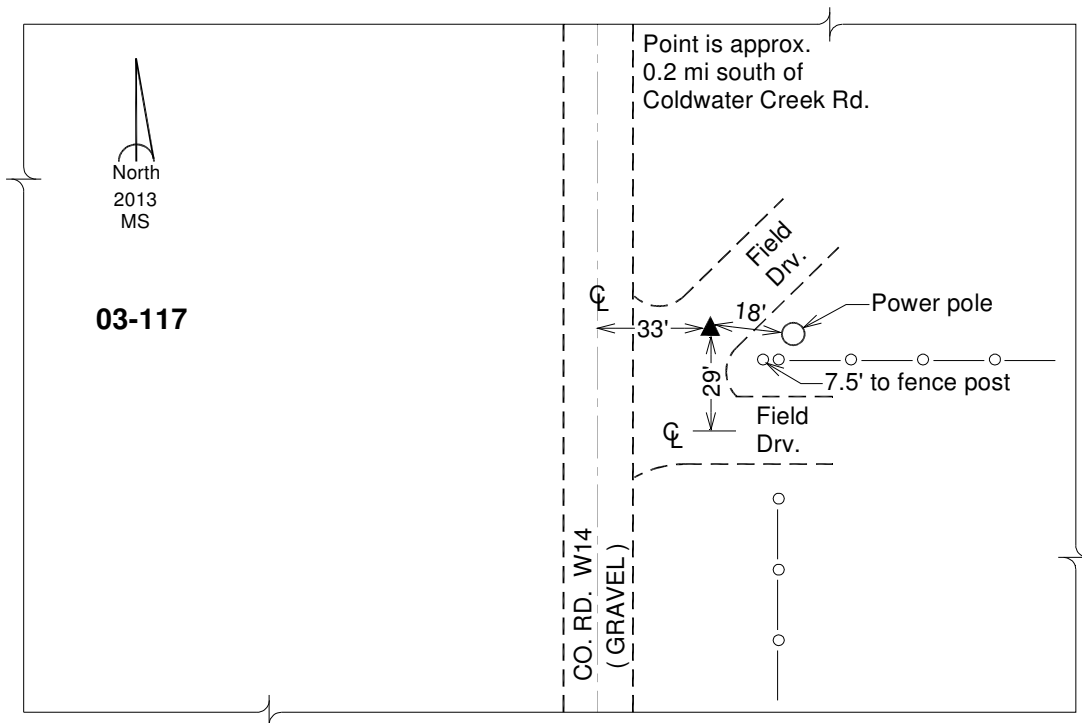
Iowa North Zone (1401) Northing: **3987211.031sft** Easting: **5319052.354sft**

IaRCS Zone 2 Northing: **9896355.678sft** Easting: **12698576.156sft**

Location: In the NW 1/4 of Sec 2 T99N R10W.

Designation: WINNESHIEK COUNTY GPS CONTROL PT 2003-117

Monument Type: 5/8" dia driven aluminum rod with a 2-1/2" dia aluminum cap and permanent magnet encased in a 5" dia PVC pipe with an aluminum access cover.



This document was prepared by DCI on February 7, 2014 for use by Winneshiek County, Iowa