

2014 Winneshiek County, Iowa
Horizontal Datum: **NAD 83(2011)** - Vertical Datum: **NAVD 1988**
Iowa North Zone (1401)
Iowa Regional Coordinate System Zone 2 Mason City
US Survey Feet

Point Name: **10118**

NAD 83(2011) Latitude: **N43°25'47.17263"** Longitude: **W91°57'12.89947"**

NAVD 88 Ortho Height: **1123.810sft** Ellip. Ht: **1024.630sft** **Geoid12A**

Mapping Angle: **1°02'53"** Combination Scale Factor: **0.9999849961**

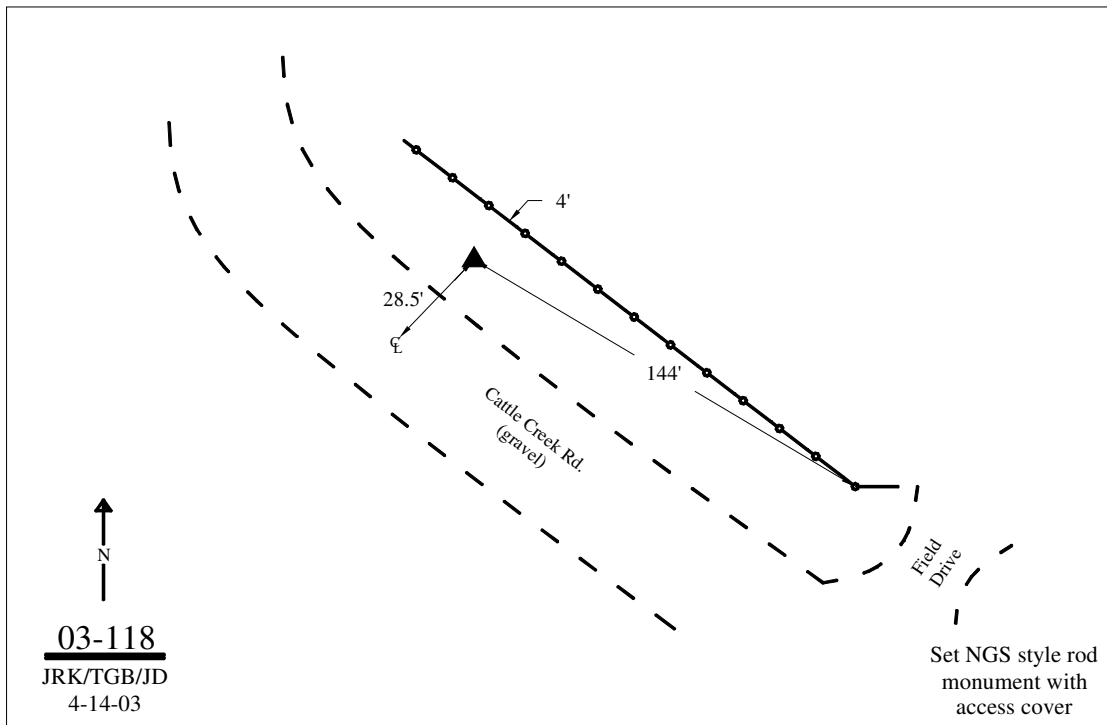
Iowa North Zone (1401) Northing: **3987880.111sft** Easting: **5332047.028sft**

IaRCS Zone 2 Northing: **9896910.577sft** Easting: **12711576.464sft**

Location: In the SE 1/4 of Sec 31 T100N R9W.

Designation: WINNESHIEK COUNTY GPS CONTROL PT 2003-118

Monument Type: 5/8" dia driven aluminum rod with a 2-1/2" dia aluminum cap and permanent magnet encased in a 5" dia PVC pipe with an aluminum access cover.



This document was prepared by DCI on February 7, 2014 for use by Winneshiek County, Iowa