

2014 Winneshiek County, Iowa
Horizontal Datum: **NAD 83(2011)** - Vertical Datum: **NAVD 1988**
Iowa North Zone (1401)
Iowa Regional Coordinate System Zone 2 Mason City
US Survey Feet

Point Name: **10120**

NAD 83(2011) Latitude: **N43°25'43.10056"** Longitude: **W91°50'20.24411"**

NAVD 88 Ortho Height: **1228.600sft** Ellip. Ht: **1129.574sft** **Geoid12A**

Mapping Angle: **1°07'33"** Combination Scale Factor: **0.9999797262**

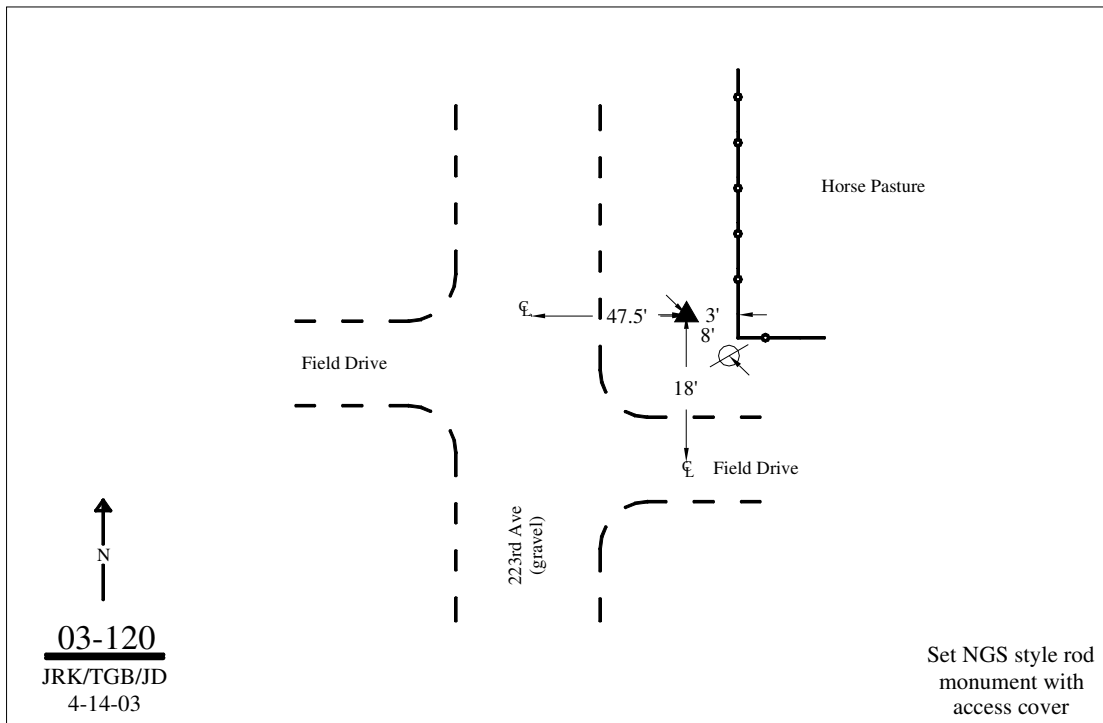
Iowa North Zone (1401) Northing: **3988045.516sft** Easting: **5362501.236sft**

IaRCS Zone 2 Northing: **9896808.692sft** Easting: **12742031.550sft**

Location: Near the S 1/4 Cor of Sec 31 T100N R8W.

Designation: WINNESHIEK COUNTY GPS CONTROL PT 2003-120

Monument Type: 5/8" dia driven aluminum rod with a 2-1/2" dia aluminum cap and permanent magnet encased in a 5" dia PVC pipe with an aluminum access cover.



This document was prepared by DCI on February 7, 2014 for use by Winneshiek County, Iowa