

2014 Winneshiek County, Iowa
Horizontal Datum: **NAD 83(2011)** - Vertical Datum: **NAVD 1988**
Iowa North Zone (1401)
Iowa Regional Coordinate System Zone 2 Mason City
US Survey Feet

Point Name: **10121**

NAD 83(2011) Latitude: **N43°25'40.37239"** Longitude: **W91°47'21.80003"**

NAVD 88 Ortho Height: **1260.040sft** Ellip. Ht: **1160.983sft** **Geoid12A**

Mapping Angle: **1°09'34"** Combination Scale Factor: **0.9999780516**

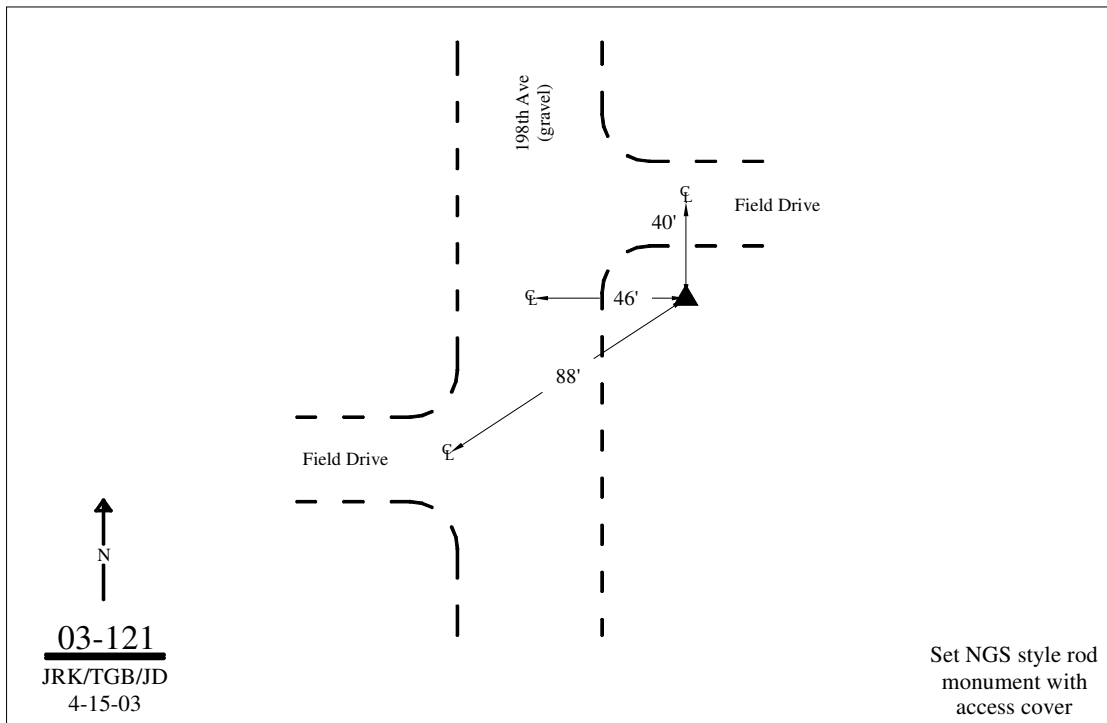
Iowa North Zone (1401) Northing: **3988031.913sft** Easting: **5375672.593sft**

IaRCS Zone 2 Northing: **9896679.609sft** Easting: **12755202.544sft**

Location: Near the NW Cor of Sec 3 T99N R8W.

Designation: WINNESHIEK COUNTY GPS CONTROL PT 2003-121

Monument Type: 5/8" dia driven aluminum rod with a 2-1/2" dia aluminum cap and permanent magnet encased in a 5" dia PVC pipe with an aluminum access cover.



This document was prepared by DCI on February 7, 2014 for use by Winneshiek County, Iowa