

2014 Winneshiek County, Iowa
Horizontal Datum: **NAD 83(2011)** - Vertical Datum: **NAVD 1988**
Iowa North Zone (1401)
Iowa Regional Coordinate System Zone 2 Mason City
US Survey Feet

Point Name: **10122**

NAD 83(2011) Latitude: **N43°25'42.26413"** Longitude: **W91°43'19.74793"**

NAVD 88 Ortho Height: **1258.480sft** Ellip. Ht: **1159.307sft** **Geoid12A**

Mapping Angle: **1°12'18"** Combination Scale Factor: **0.9999782537**

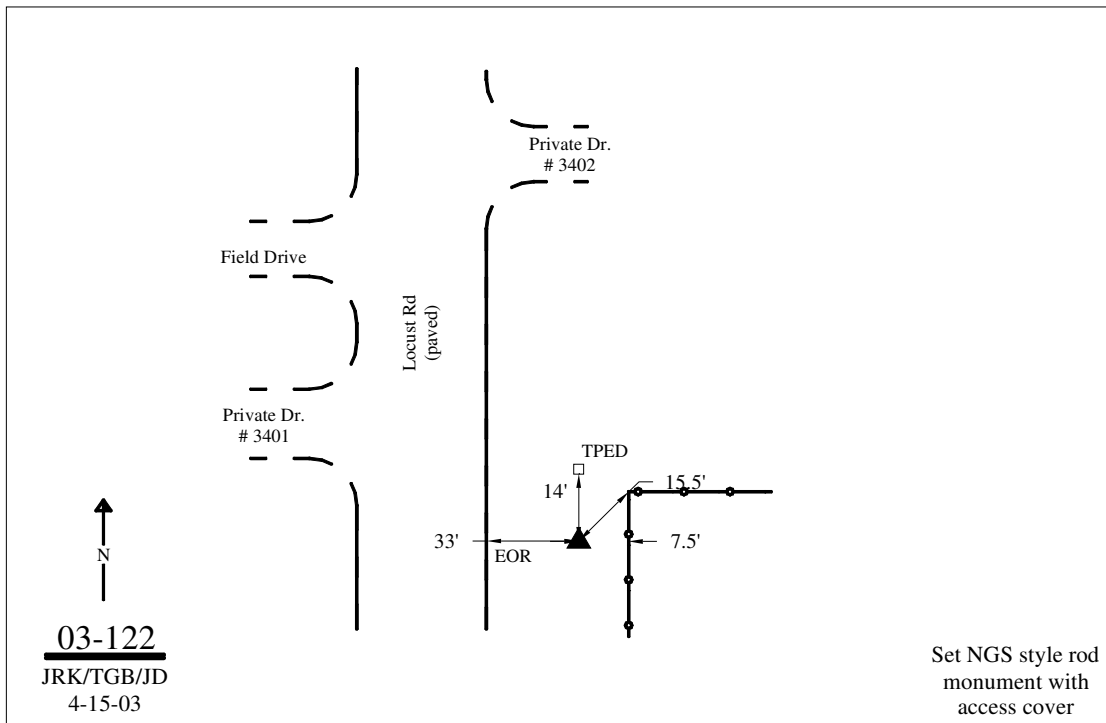
Iowa North Zone (1401) Northing: **3988591.938sft** Easting: **5393527.360sft**

IaRCS Zone 2 Northing: **9897083.197sft** Easting: **12773061.887sft**

Location: In the NW 1/4 of Sec 6 T99N R7W.

Designation: WINNESHIEK COUNTY GPS CONTROL PT 2003-122

Monument Type: 5/8" dia driven aluminum rod with a 2-1/2" dia aluminum cap and permanent magnet encased in a 5" dia PVC pipe with an aluminum access cover.



This document was prepared by DCI on February 7, 2014 for use by Winneshiek County, Iowa