

**2014 Winneshiek County, Iowa**  
Horizontal Datum: **NAD 83(2011)** - Vertical Datum: **NAVD 1988**  
Iowa North Zone (1401)  
Iowa Regional Coordinate System Zone 2 Mason City  
US Survey Feet

Point Name: **10123**

NAD 83(2011)      Latitude: **N43°25'31.78931"**      Longitude: **W91°40'23.84152"**

NAVD 88 Ortho Height: **1077.320sft**      Ellip. Ht: **977.980sft**      **Geoid12A**

Mapping Angle: **1°14'17"**      Combination Scale Factor: **0.9999862298**

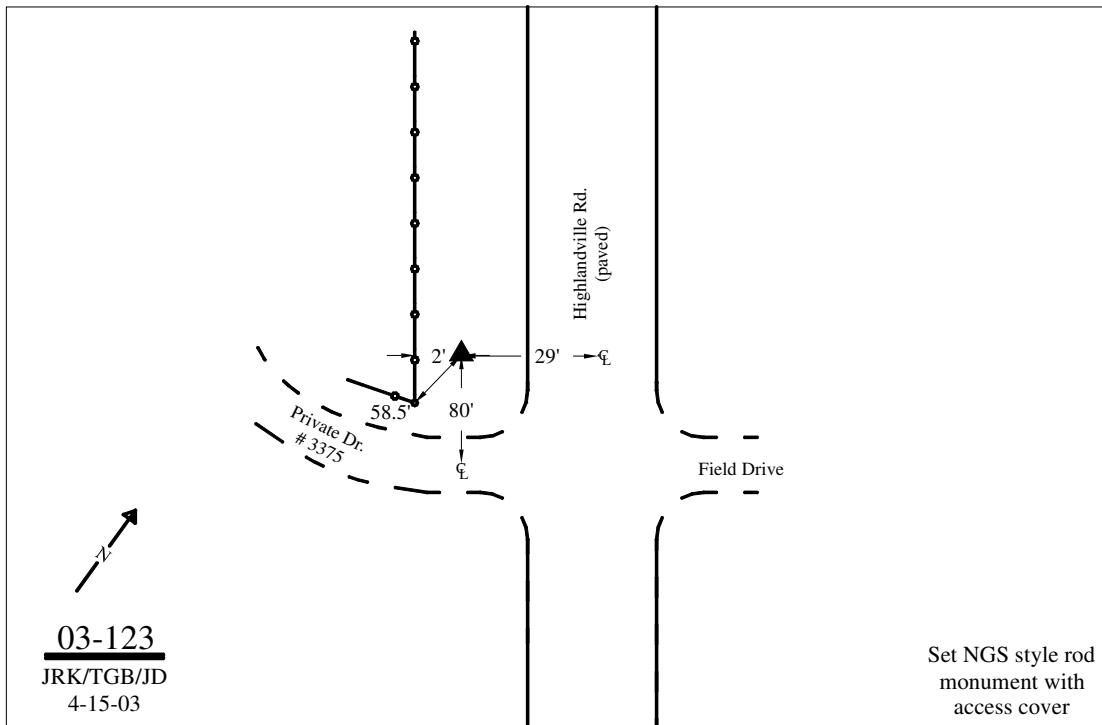
Iowa North Zone (1401)      Northing: **3987808.286sft**      Easting: **5406528.493sft**

IaRCS Zone 2      Northing: **9896185.740sft**      Easting: **12786055.922sft**

**Location:** In the NE 1/4 of Sec 4 T99N R7W.

**Designation:** WINNESHIEK COUNTY GPS CONTROL PT 2003-123

**Monument Type:** 5/8" dia driven aluminum rod with a 2-1/2" dia aluminum cap and permanent magnet encased in a 5" dia PVC pipe with an aluminum access cover.



*This document was prepared by DCI on February 7, 2014 for use by Winneshiek County, Iowa*