

2014 Winneshiek County, Iowa
Horizontal Datum: **NAD 83(2011)** - Vertical Datum: **NAVD 1988**
Iowa North Zone (1401)
Iowa Regional Coordinate System Zone 2 Mason City
US Survey Feet

Point Name: **10126**

NAD 83(2011) Latitude: **N43°23'07.17585"** Longitude: **W91°54'32.83844"**

NAVD 88 Ortho Height: **1133.660sft** Ellip. Ht: **1034.592sft** **Geoid12A**

Mapping Angle: **1°04'42"** Combination Scale Factor: **0.9999744787**

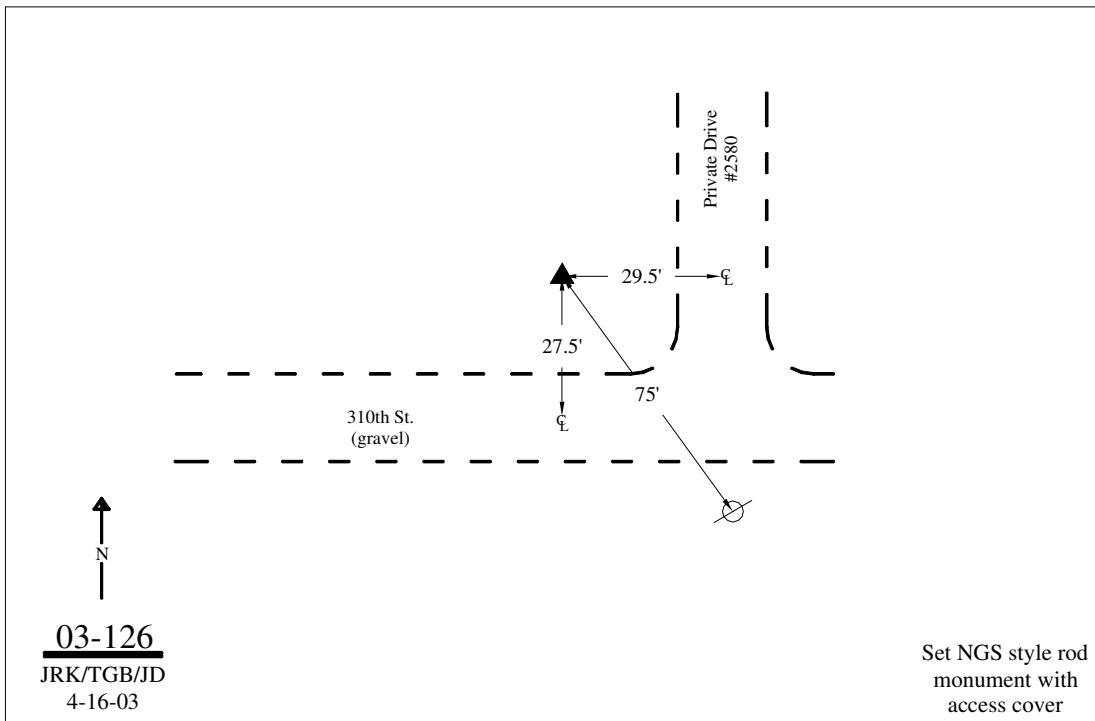
Iowa North Zone (1401) Northing: **3971901.869sft** Easting: **5344161.420sft**

IaRCS Zone 2 Northing: **9880826.211sft** Easting: **12723550.369sft**

Location: Near the SE Cor of Sec 16 T99N R9W.

Designation: WINNESHIEK COUNTY GPS CONTROL PT 2003-126

Monument Type: 5/8" dia driven aluminum rod with a 2-1/2" dia aluminum cap and permanent magnet encased in a 5" dia PVC pipe with an aluminum access cover.



This document was prepared by DCI on February 7, 2014 for use by Winneshiek County, Iowa