

2014 Winneshiek County, Iowa
Horizontal Datum: **NAD 83(2011)** - Vertical Datum: **NAVD 1988**
Iowa North Zone (1401)
Iowa Regional Coordinate System Zone 2 Mason City
US Survey Feet

Point Name: **10127**

NAD 83(2011) Latitude: **N43°23'18.77113"** Longitude: **W91°51'23.16470"**

NAVD 88 Ortho Height: **922.790sft** Ellip. Ht: **823.750sft** **Geoid12A**

Mapping Angle: **1°06'50"** Combination Scale Factor: **0.9999852453**

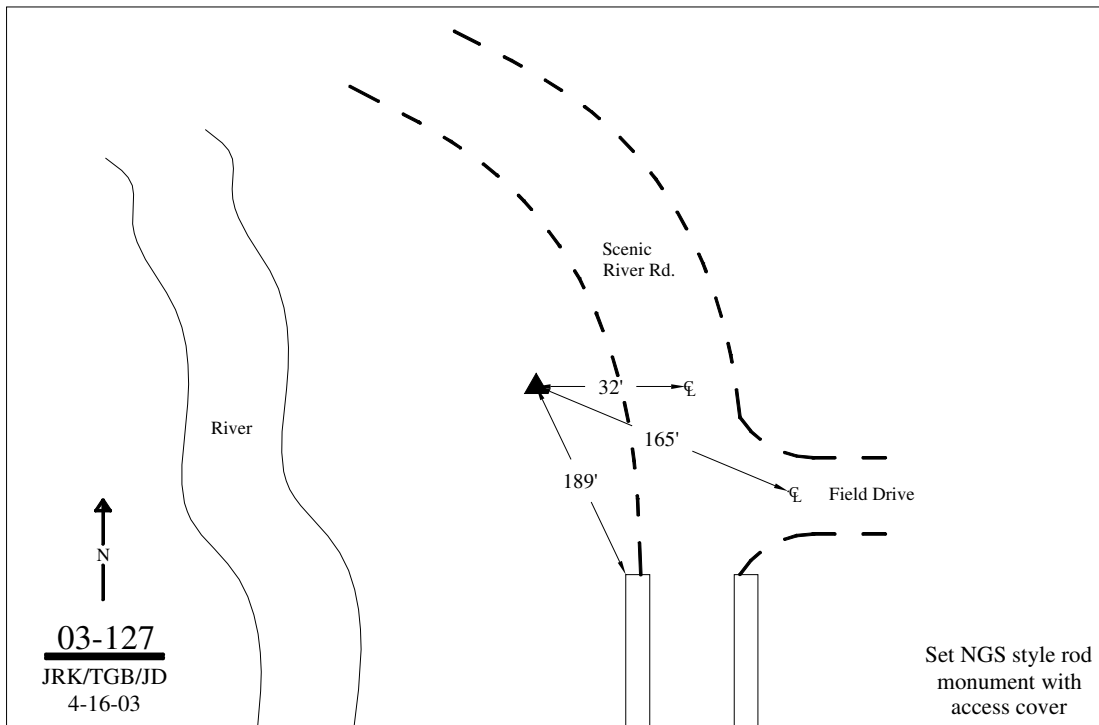
Iowa North Zone (1401) Northing: **3973343.637sft** Easting: **5358142.959sft**

IaRCS Zone 2 Northing: **9882145.270sft** Easting: **12737544.387sft**

Location: In the SE 1/4 of Sec 13 T99N R9W.

Designation: WINNESHIEK COUNTY GPS CONTROL PT 2003-127

Monument Type: 5/8" dia driven aluminum rod with a 2-1/2" dia aluminum cap and permanent magnet encased in a 5" dia PVC pipe with an aluminum access cover.



This document was prepared by DCI on February 7, 2014 for use by Winneshiek County, Iowa