

2014 Winneshiek County, Iowa
Horizontal Datum: **NAD 83(2011)** - Vertical Datum: **NAVD 1988**
Iowa North Zone (1401)
Iowa Regional Coordinate System Zone 2 Mason City
US Survey Feet

Point Name: **10130**

NAD 83(2011) Latitude: **N43°23'08.50669"** Longitude: **W91°40'12.94257"**

NAVD 88 Ortho Height: **1058.310sft** Ellip. Ht: **958.927sft** **Geoid12A**

Mapping Angle: **1°14'24"** Combination Scale Factor: **0.9999781696**

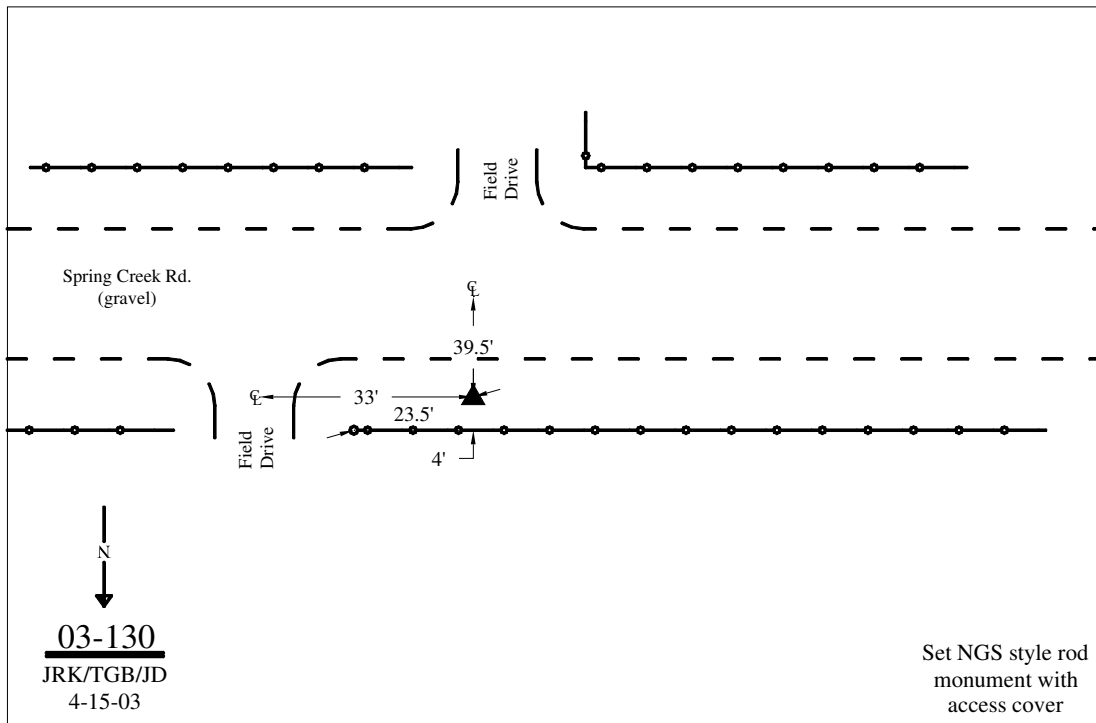
Iowa North Zone (1401) Northing: **3973321.194sft** Easting: **5407646.621sft**

IaRCS Zone 2 Northing: **9881689.079sft** Easting: **12787047.246sft**

Location: Near the SW Cor of Sec 15 T99N R7W.

Designation: WINNESHIEK COUNTY GPS CONTROL PT 2003-130

Monument Type: 5/8" dia driven aluminum rod with a 2-1/2" dia aluminum cap and permanent magnet encased in a 5" dia PVC pipe with an aluminum access cover.



This document was prepared by DCI on February 7, 2014 for use by Winneshiek County, Iowa