

2014 Winneshiek County, Iowa
Horizontal Datum: **NAD 83(2011)** - Vertical Datum: **NAVD 1988**
Iowa North Zone (1401)
Iowa Regional Coordinate System Zone 2 Mason City
US Survey Feet

Point Name: **10131**

NAD 83(2011) Latitude: **N43°20'31.90945"** Longitude: **W92°04'48.40585"**

NAVD 88 Ortho Height: **1208.170sft** Ellip. Ht: **1108.774sft** **Geoid12A**

Mapping Angle: **0°57'44"** Combination Scale Factor: **0.9999617745**

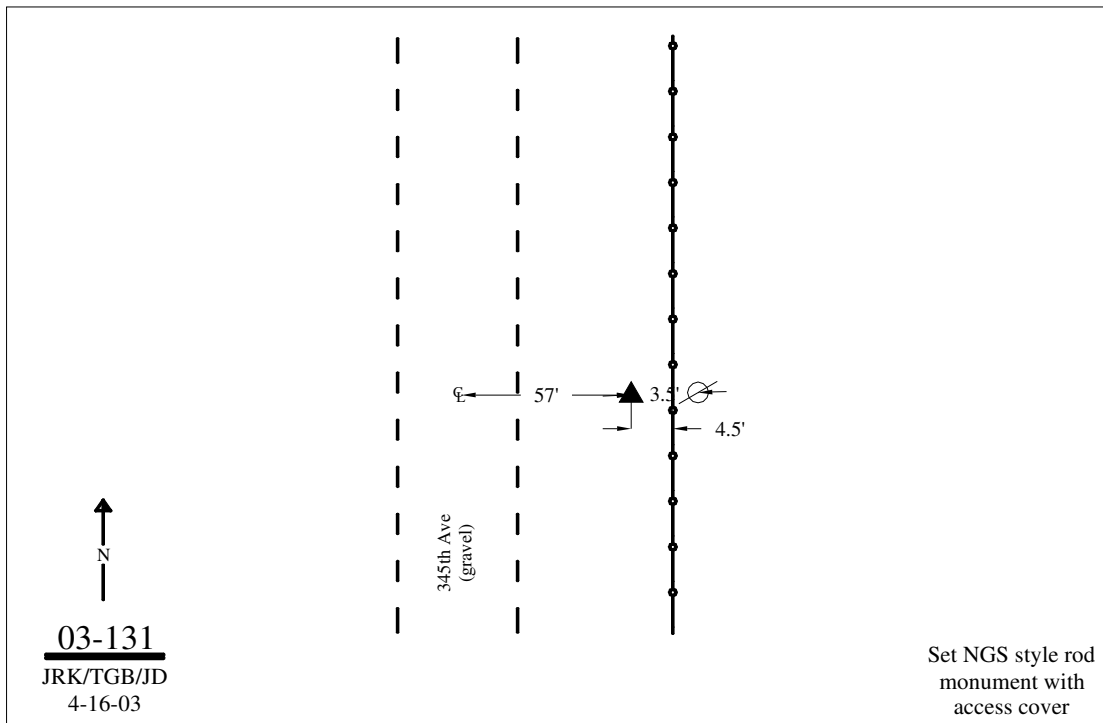
Iowa North Zone (1401) Northing: **3955373.633sft** Easting: **5298974.573sft**

IaRCS Zone 2 Northing: **9864695.211sft** Easting: **12678218.678sft**

Location: Near the NW Cor of Sec 6 T98N R10W.

Designation: WINNESHIEK COUNTY GPS CONTROL PT 2003-131

Monument Type: 5/8" dia driven aluminum rod with a 2-1/2" dia aluminum cap and permanent magnet encased in a 5" dia PVC pipe with an aluminum access cover.



This document was prepared by DCI on February 7, 2014 for use by Winneshiek County, Iowa