

2014 Winneshiek County, Iowa
Horizontal Datum: **NAD 83(2011)** - Vertical Datum: **NAVD 1988**
Iowa North Zone (1401)
Iowa Regional Coordinate System Zone 2 Mason City
US Survey Feet

Point Name: **10132**

NAD 83(2011) Latitude: **N43°20'30.71490"** Longitude: **W92°00'34.38036"**

NAVD 88 Ortho Height: **1221.860sft** Ellip. Ht: **1122.678sft** **Geoid12A**

Mapping Angle: **1°00'37"** Combination Scale Factor: **0.9999610429**

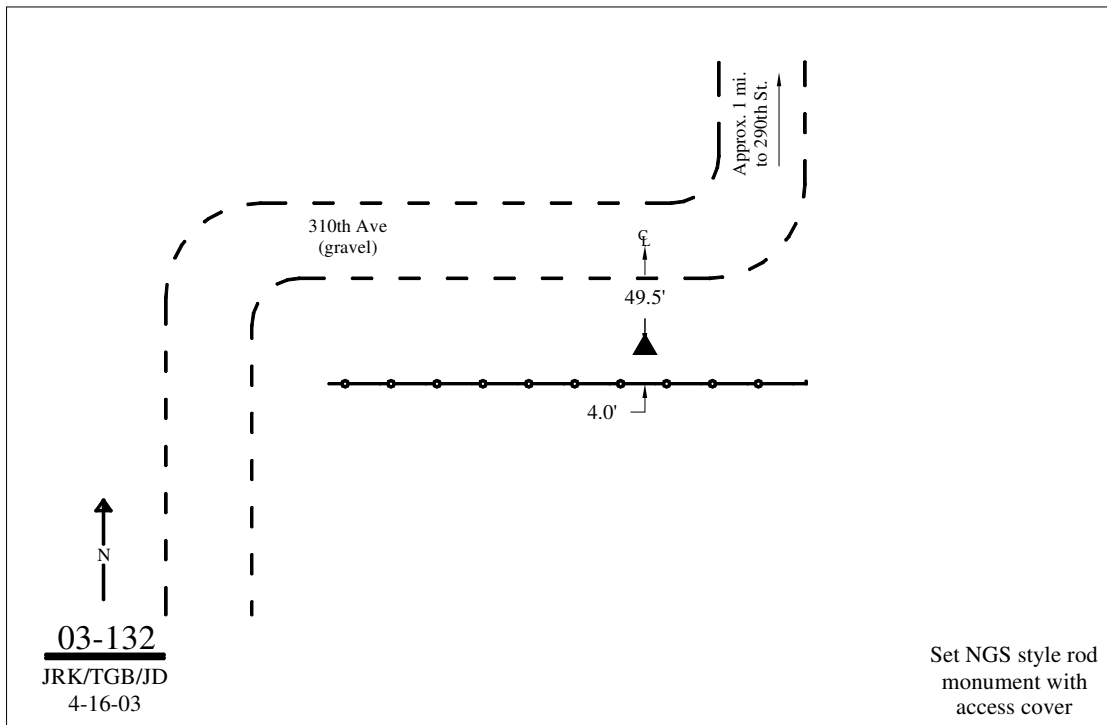
Iowa North Zone (1401) Northing: **3955575.813sft** Easting: **5317746.185sft**

IaRCS Zone 2 Northing: **9864732.325sft** Easting: **12696991.962sft**

Location: Near the N 1/4 Cor of Sec 3 T98N R10W.

Designation: WINNESHIEK COUNTY GPS CONTROL PT 2003-132

Monument Type: 5/8" dia driven aluminum rod with a 2-1/2" dia aluminum cap and permanent magnet encased in a 5" dia PVC pipe with an aluminum access cover.



This document was prepared by DCI on February 7, 2014 for use by Winneshiek County, Iowa