

2014 Winneshiek County, Iowa
Horizontal Datum: **NAD 83(2011)** - Vertical Datum: **NAVD 1988**
Iowa North Zone (1401)
Iowa Regional Coordinate System Zone 2 Mason City
US Survey Feet

Point Name: **10133**

NAD 83(2011) Latitude: **N43°20'30.12522"** Longitude: **W91°57'43.59188"**

NAVD 88 Ortho Height: **1194.370sft** Ellip. Ht: **1095.294sft** **Geoid12A**

Mapping Angle: **1°02'32"** Combination Scale Factor: **0.9999623156**

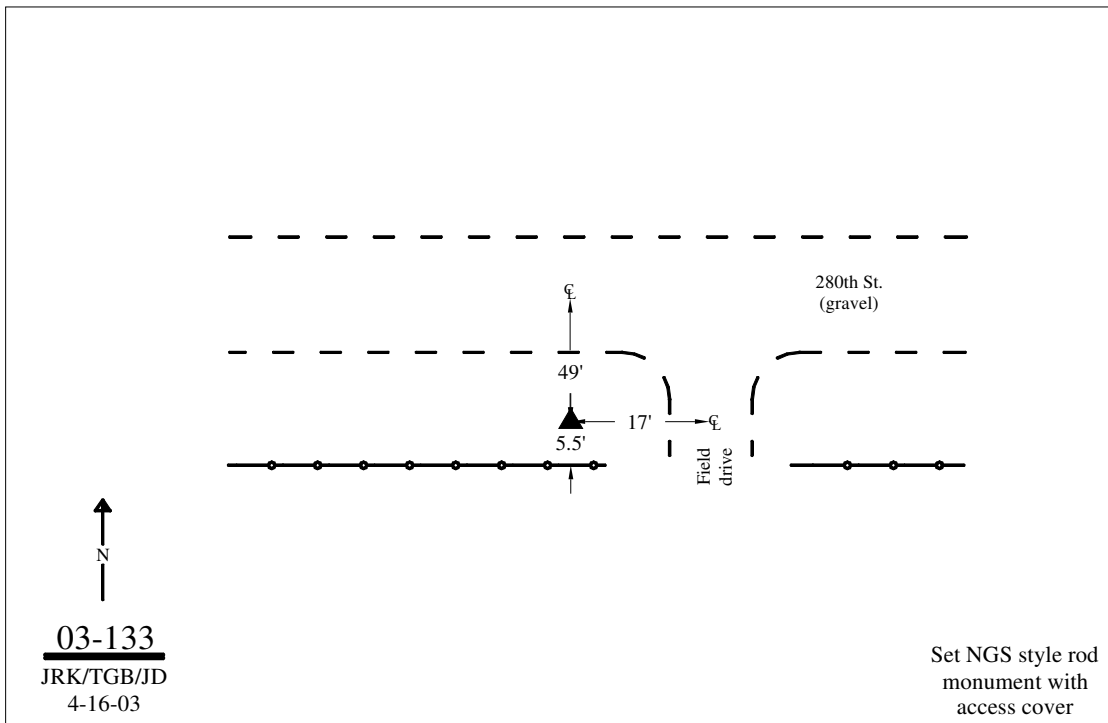
Iowa North Zone (1401) Northing: **3955742.162sft** Easting: **5330366.434sft**

IaRCS Zone 2 Northing: **9864787.781sft** Easting: **12709613.603sft**

Location: Near the NE Cor of Sec 1 T98N R10W.

Designation: WINNESHIEK COUNTY GPS CONTROL PT 2003-133

Monument Type: 5/8" dia driven aluminum rod with a 2-1/2" dia aluminum cap and permanent magnet encased in a 5" dia PVC pipe with an aluminum access cover.



This document was prepared by DCI on February 7, 2014 for use by Winneshiek County, Iowa