

**2014 Winneshiek County, Iowa**  
Horizontal Datum: **NAD 83(2011)** - Vertical Datum: **NAVD 1988**  
Iowa North Zone (1401)  
Iowa Regional Coordinate System Zone 2 Mason City  
US Survey Feet

Point Name: **10134**

NAD 83(2011)      Latitude: **N43°20'37.73974"**      Longitude: **W91°54'07.68209"**

NAVD 88 Ortho Height: **1171.760sft**      Ellip. Ht: **1072.792sft**      **Geoid12A**

Mapping Angle: **1°04'59"**      Combination Scale Factor: **0.9999638250**

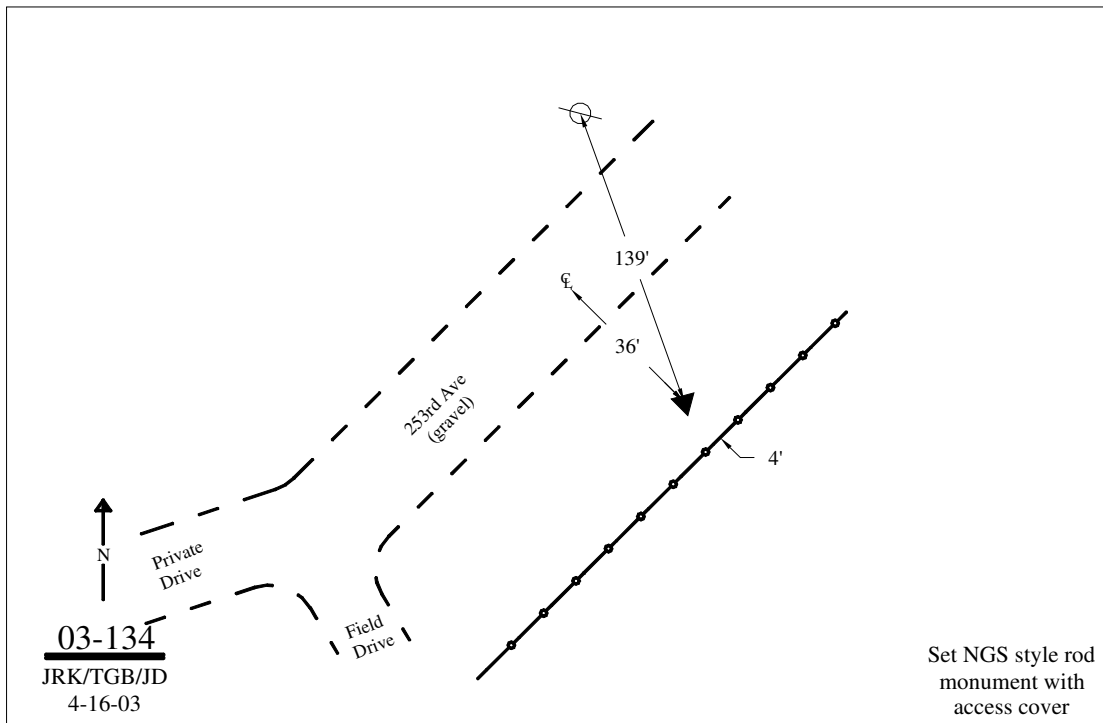
Iowa North Zone (1401)      Northing: **3956808.904sft**      Easting: **5346304.790sft**

IaRCS Zone 2      Northing: **9865714.566sft**      Easting: **12725561.237sft**

**Location:** In the SW 1/4 of Sec 34 T99N R9W.

**Designation:** WINNESHIEK COUNTY GPS CONTROL PT 2003-134

**Monument Type:** 5/8" dia driven aluminum rod with a 2-1/2" dia aluminum cap and permanent magnet encased in a 5" dia PVC pipe with an aluminum access cover.



*This document was prepared by DCI on February 7, 2014 for use by Winneshiek County, Iowa*