

**2014 Winneshiek County, Iowa**  
Horizontal Datum: **NAD 83(2011)** - Vertical Datum: **NAVD 1988**  
Iowa North Zone (1401)  
Iowa Regional Coordinate System Zone 2 Mason City  
US Survey Feet

Point Name: **10135**

NAD 83(2011)      Latitude: **N43°20'31.38682"**      Longitude: **W91°50'28.61940"**

NAVD 88 Ortho Height: **910.760sft**      Ellip. Ht: **811.824sft**      **Geoid12A**

Mapping Angle: **1°07'27"**      Combination Scale Factor: **0.9999759119**

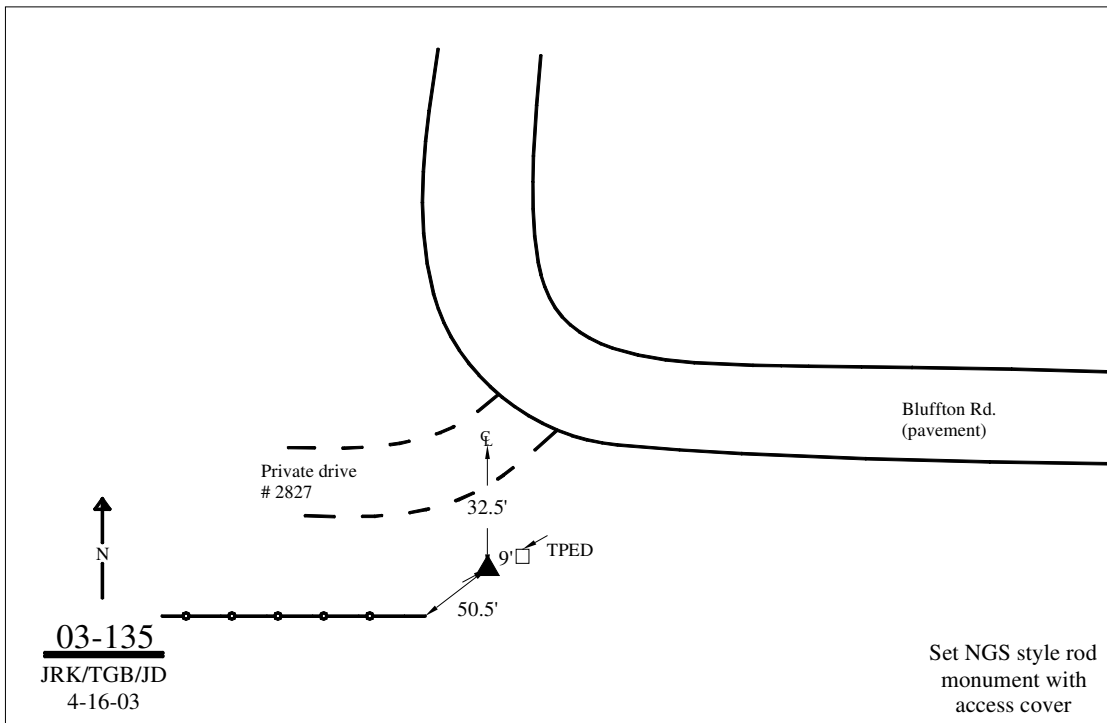
Iowa North Zone (1401)      Northing: **3956477.565sft**      Easting: **5362502.524sft**

IaRCS Zone 2      Northing: **9865241.109sft**      Easting: **12741755.972sft**

**Location:** Near the NW Cor of Sec 6 T98N R8W.

**Designation:** WINNESHIEK COUNTY GPS CONTROL PT 2003-135

**Monument Type:** 5/8" dia driven aluminum rod with a 2-1/2" dia aluminum cap and permanent magnet encased in a 5" dia PVC pipe with an aluminum access cover.



*This document was prepared by DCI on February 7, 2014 for use by Winneshiek County, Iowa*