

2014 Winneshiek County, Iowa
Horizontal Datum: **NAD 83(2011)** - Vertical Datum: **NAVD 1988**
Iowa North Zone (1401)
Iowa Regional Coordinate System Zone 2 Mason City
US Survey Feet

Point Name: **10136**

NAD 83(2011) Latitude: **N43°20'43.38211"** Longitude: **W91°46'30.51980"**

NAVD 88 Ortho Height: **1196.915sft** Ellip. Ht: **1097.931sft** **Geoid12A**

Mapping Angle: **1°10'08"** Combination Scale Factor: **0.9999629495**

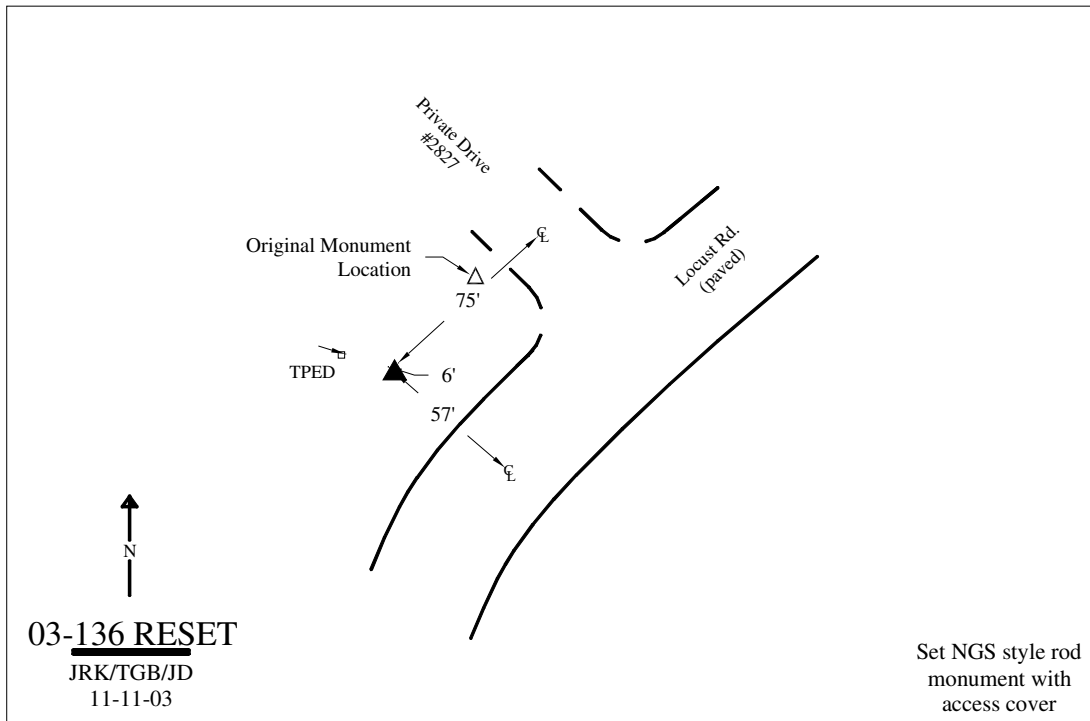
Iowa North Zone (1401) Northing: **3958043.943sft** Easting: **5380069.615sft**

IaRCS Zone 2 Northing: **9866653.468sft** Easting: **12759336.696sft**

Location: In the NW 1/4 of Sec 3 T98N R8W.

Designation: WINNESHIEK COUNTY GPS CONTROL PT 2003-136 RESET

Monument Type: 5/8" dia driven aluminum rod with a 3-1/2" dia aluminum cap and permanent magnet encased in a 5" dia PVC pipe with an aluminum access cover.



This document was prepared by DCI on February 7, 2014 for use by Winneshiek County, Iowa