

2014 Winneshiek County, Iowa
Horizontal Datum: **NAD 83(2011)** - Vertical Datum: **NAVD 1988**
Iowa North Zone (1401)
Iowa Regional Coordinate System Zone 2 Mason City
US Survey Feet

Point Name: **10137**

NAD 83(2011) Latitude: **N43°20'31.01949"** Longitude: **W91°42'46.93499"**

NAVD 88 Ortho Height: **1172.900sft** Ellip. Ht: **1073.722sft** **Geoid12A**

Mapping Angle: **1°12'40"** Combination Scale Factor: **0.9999633959**

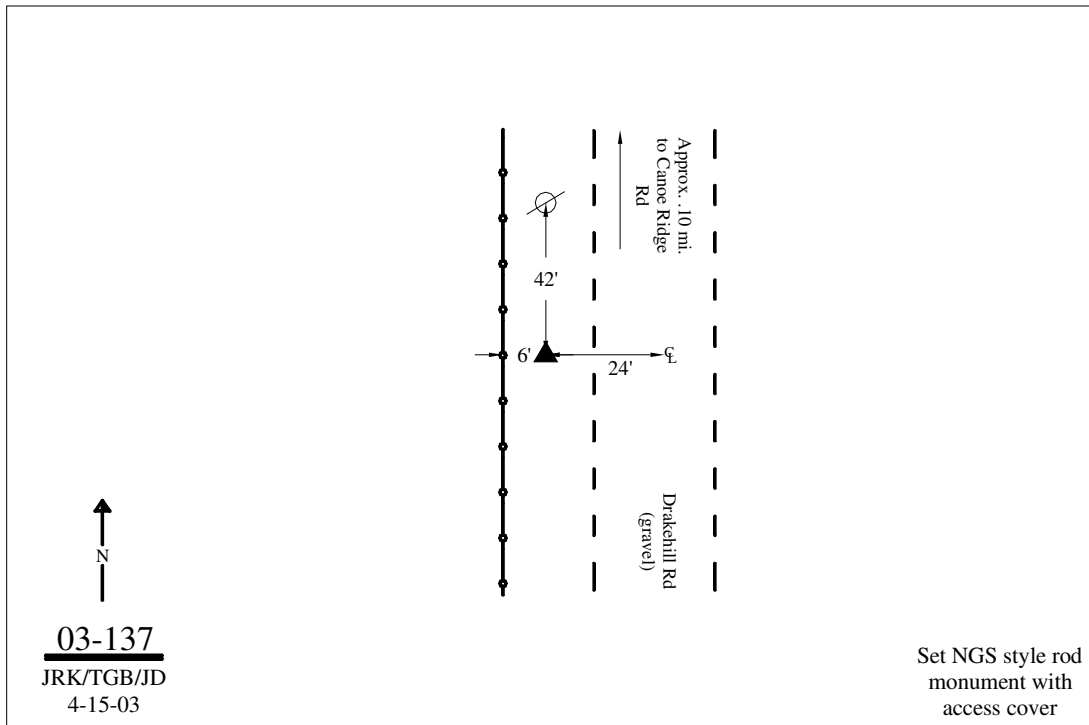
Iowa North Zone (1401) Northing: **3957135.635sft** Easting: **5396614.375sft**

IaRCS Zone 2 Northing: **9865600.235sft** Easting: **12775873.408sft**

Location: Near the N 1/4 Cor of Sec 6 T98N R7W.

Designation: WINNESHIEK COUNTY GPS CONTROL PT 2003-137

Monument Type: 5/8" dia driven aluminum rod with a 2-1/2" dia aluminum cap and permanent magnet encased in a 5" dia PVC pipe with an aluminum access cover.



This document was prepared by DCI on February 7, 2014 for use by Winneshiek County, Iowa