

2014 Winneshiek County, Iowa
Horizontal Datum: **NAD 83(2011)** - Vertical Datum: **NAVD 1988**
Iowa North Zone (1401)
Iowa Regional Coordinate System Zone 2 Mason City
US Survey Feet

Point Name: **10138**

NAD 83(2011) Latitude: **N43°20'31.61804"** Longitude: **W91°39'55.06494"**

NAVD 88 Ortho Height: **966.210sft** Ellip. Ht: **866.810sft** **Geoid12A**

Mapping Angle: **1°14'36"** Combination Scale Factor: **0.9999733017**

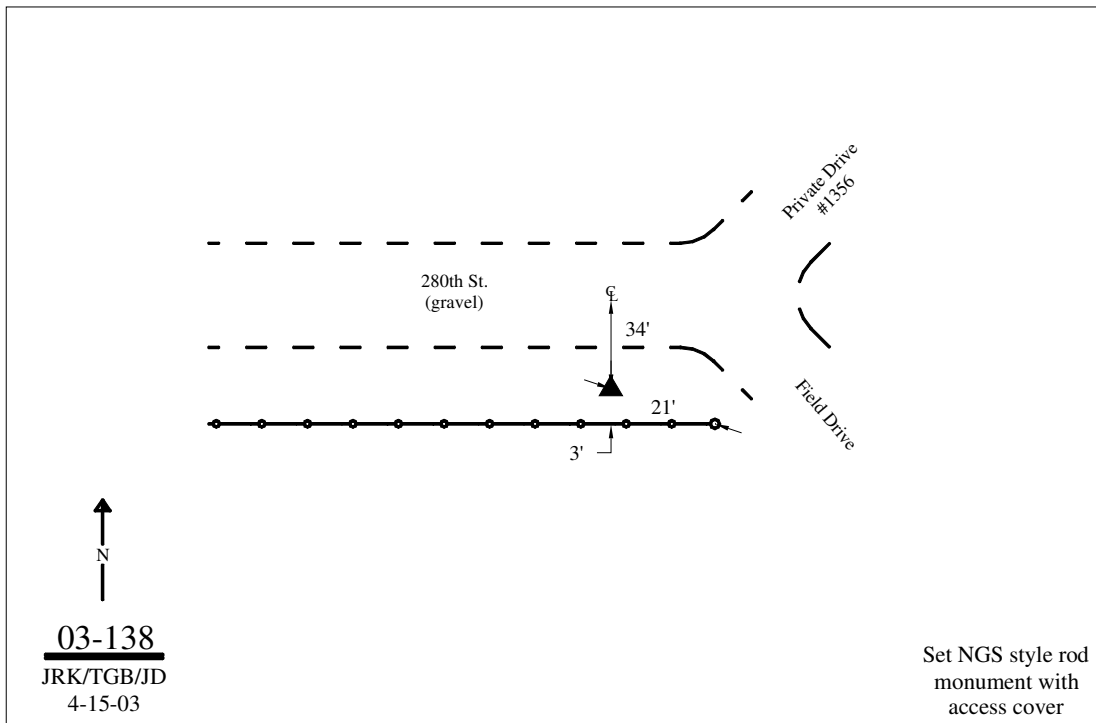
Iowa North Zone (1401) Northing: **3957468.263sft** Easting: **5409311.244sft**

IaRCS Zone 2 Northing: **9865821.717sft** Easting: **12788573.121sft**

Location: Near the NE Cor of Sec 4 T98N R7W.

Designation: WINNESHIEK COUNTY GPS CONTROL PT 2003-138

Monument Type: 5/8" dia driven aluminum rod with a 2-1/2" dia aluminum cap and permanent magnet encased in a 5" dia PVC pipe with an aluminum access cover.



This document was prepared by DCI on February 7, 2014 for use by Winneshiek County, Iowa