

**2014 Winneshiek County, Iowa**  
Horizontal Datum: **NAD 83(2011)** - Vertical Datum: **NAVD 1988**  
Iowa North Zone (1401)  
Iowa Regional Coordinate System Zone 2 Mason City  
US Survey Feet

Point Name: **10142**

NAD 83(2011)      Latitude: **N43°17'29.65357"**      Longitude: **W91°50'37.18308"**

NAVD 88 Ortho Height: **1094.540sft**      Ellip. Ht: **995.674sft**      **Geoid12A**

Mapping Angle: **1°07'21"**      Combination Scale Factor: **0.9999571407**

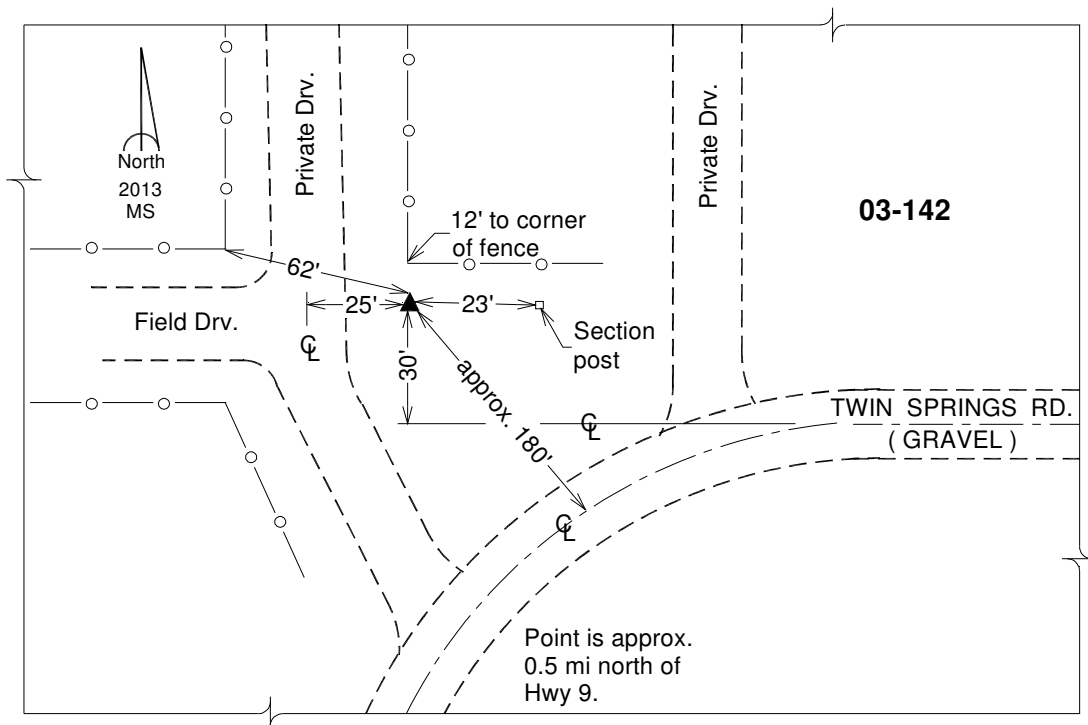
Iowa North Zone (1401)      Northing: **3938068.172sft**      Easting: **5362230.286sft**

IaRCS Zone 2      Northing: **9846834.133sft**      Easting: **12741322.269sft**

**Location:** Near the W 1/4 Cor of Sec 19 T98N R9W.

**Designation:** WINNESHIEK COUNTY GPS CONTROL PT 2003-142

**Monument Type:** 5/8" dia driven aluminum rod with a 2-1/2" dia aluminum cap and permanent magnet encased in a 5" dia PVC pipe with an aluminum access cover.



*This document was prepared by DCI on February 7, 2014 for use by Winneshiek County, Iowa*