

2014 Winneshiek County, Iowa
Horizontal Datum: **NAD 83(2011)** - Vertical Datum: **NAVD 1988**
Iowa North Zone (1401)
Iowa Regional Coordinate System Zone 2 Mason City
US Survey Feet

Point Name: **10144**

NAD 83(2011) Latitude: **N43°17'38.71207"** Longitude: **W91°43'25.93715"**

NAVD 88 Ortho Height: **946.140sft** Ellip. Ht: **847.100sft** **Geoid12A**

Mapping Angle: **1°12'14"** Combination Scale Factor: **0.9999647090**

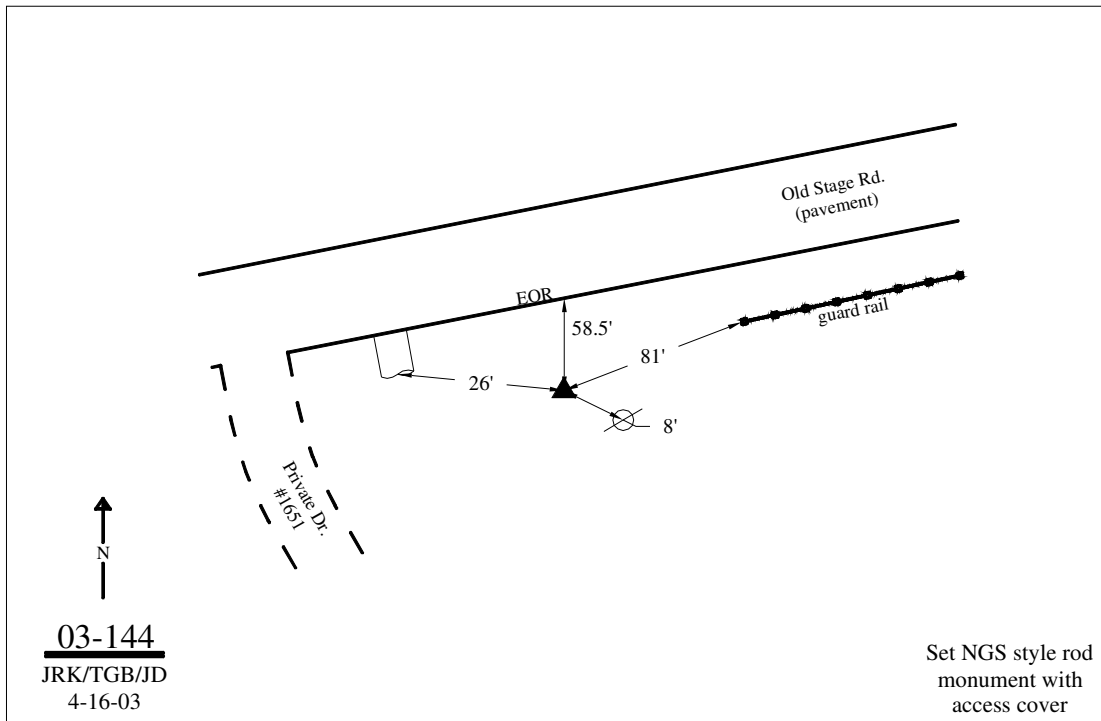
Iowa North Zone (1401) Northing: **3939632.593sft** Easting: **5394099.288sft**

IaRCS Zone 2 Northing: **9848119.247sft** Easting: **12773205.050sft**

Location: In the NE 1/4 of Sec 24 T98N R8W.

Designation: WINNESHIEK COUNTY GPS CONTROL PT 2003-144

Monument Type: 5/8" dia driven aluminum rod with a 2-1/2" dia aluminum cap and permanent magnet encased in a 5" dia PVC pipe with an aluminum access cover.



This document was prepared by DCI on February 7, 2014 for use by Winneshiek County, Iowa