

2014 Winneshiek County, Iowa
Horizontal Datum: **NAD 83(2011)** - Vertical Datum: **NAVD 1988**
Iowa North Zone (1401)
Iowa Regional Coordinate System Zone 2 Mason City
US Survey Feet

Point Name: **10145**

NAD 83(2011) Latitude: **N43°17'51.73633"** Longitude: **W91°39'51.74058"**

NAVD 88 Ortho Height: **886.490sft** Ellip. Ht: **787.151sft** **Geoid12A**

Mapping Angle: **1°14'39"** Combination Scale Factor: **0.9999682626**

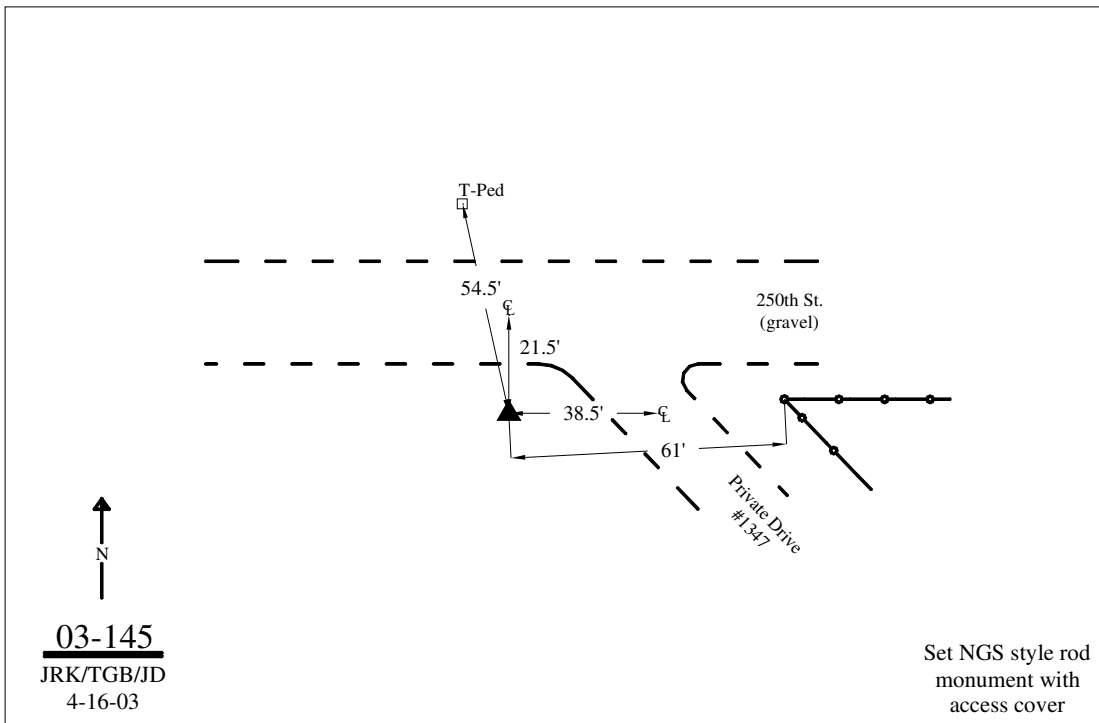
Iowa North Zone (1401) Northing: **3941289.347sft** Easting: **5409908.324sft**

IaRCS Zone 2 Northing: **9849637.606sft** Easting: **12789028.617sft**

Location: In the NE 1/4 of Sec 21 T98N R7W.

Designation: WINNESHIEK COUNTY GPS CONTROL PT 2003-145

Monument Type: 5/8" dia driven aluminum rod with a 2-1/2" dia aluminum cap and permanent magnet encased in a 5" dia PVC pipe with an aluminum access cover.



This document was prepared by DCI on February 7, 2014 for use by Winneshiek County, Iowa