

2014 Winneshiek County, Iowa
Horizontal Datum: **NAD 83(2011)** - Vertical Datum: **NAVD 1988**
Iowa North Zone (1401)
Iowa Regional Coordinate System Zone 2 Mason City
US Survey Feet

Point Name: **10147**

NAD 83(2011) Latitude: **N43°15'19.45969"** Longitude: **W92°01'22.80934"**

NAVD 88 Ortho Height: **1162.640sft** Ellip. Ht: **1063.176sft** **Geoid12A**

Mapping Angle: **1°00'04"** Combination Scale Factor: **0.9999472370**

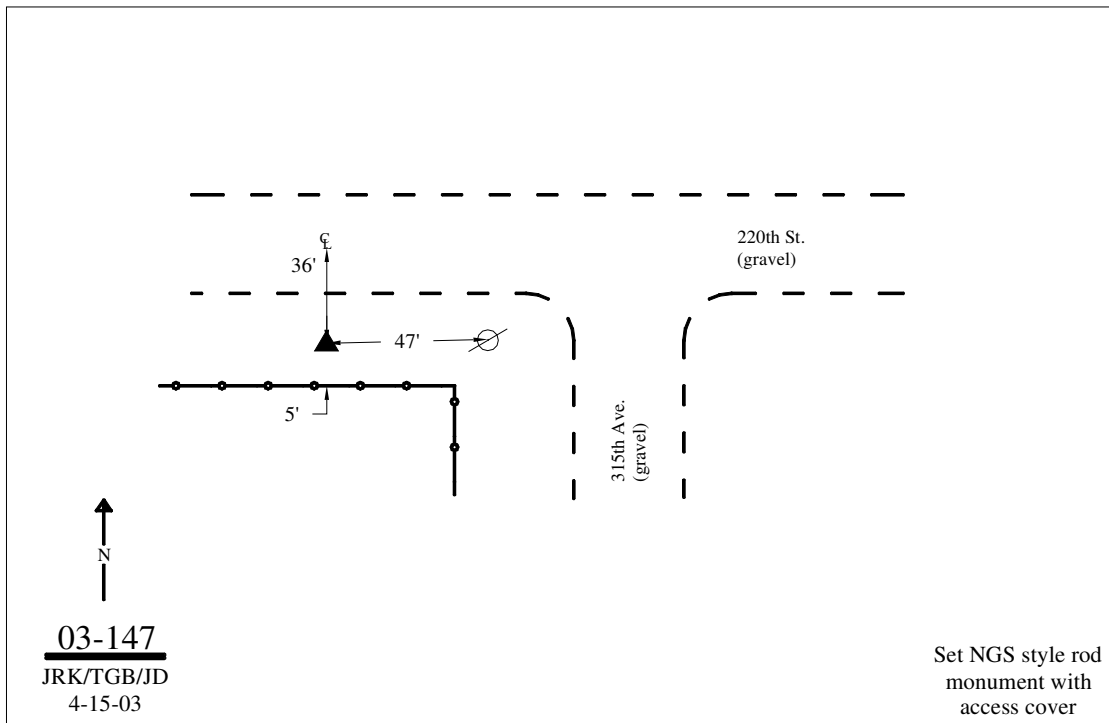
Iowa North Zone (1401) Northing: **3924003.390sft** Easting: **5314718.425sft**

IaRCS Zone 2 Northing: **9833186.485sft** Easting: **12693686.671sft**

Location: Near the NE Cor of Sec 4 T97N R10W.

Designation: WINNESHIEK COUNTY GPS CONTROL PT 2003-147

Monument Type: 5/8" dia driven aluminum rod with a 2-1/2" dia aluminum cap and permanent magnet encased in a 5" dia PVC pipe with an aluminum access cover.



This document was prepared by DCI on February 7, 2014 for use by Winneshiek County, Iowa