

2014 Winneshiek County, Iowa
Horizontal Datum: **NAD 83(2011)** - Vertical Datum: **NAVD 1988**
Iowa North Zone (1401)
Iowa Regional Coordinate System Zone 2 Mason City
US Survey Feet

Point Name: **10148**

NAD 83(2011) Latitude: **N43°15'19.11039"** Longitude: **W91°57'45.63642"**

NAVD 88 Ortho Height: **1116.780sft** Ellip. Ht: **1017.446sft** **Geoid12A**

Mapping Angle: **1°02'31"** Combination Scale Factor: **0.9999494013**

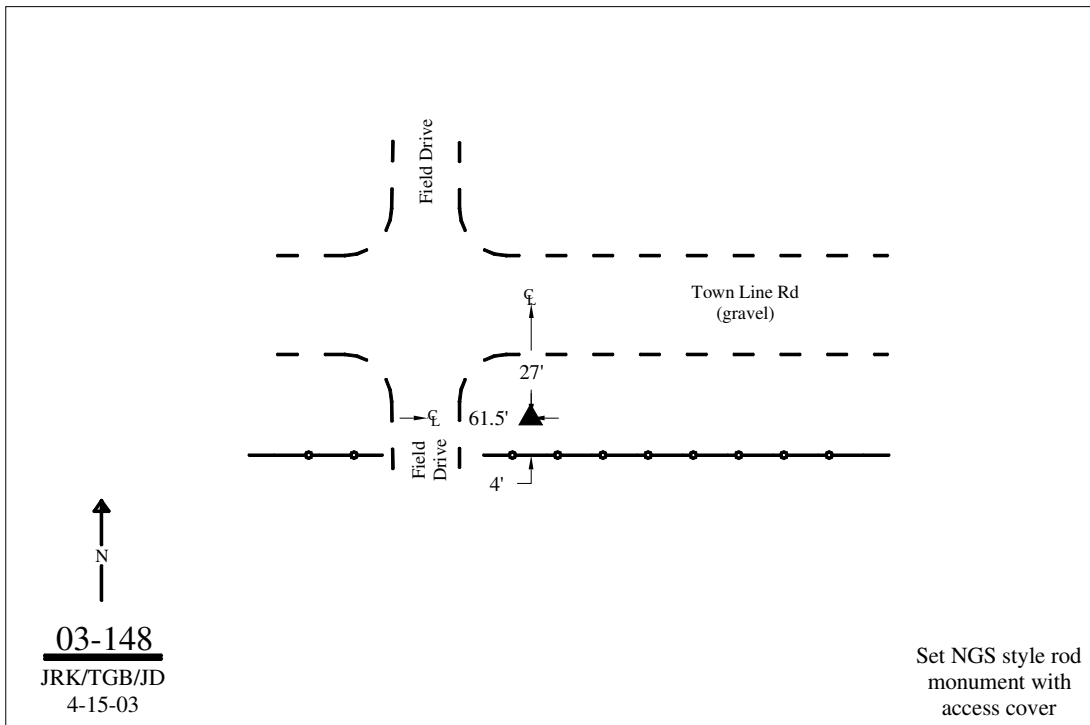
Iowa North Zone (1401) Northing: **3924254.537sft** Easting: **5330787.977sft**

IaRCS Zone 2 Northing: **9833296.420sft** Easting: **12709758.552sft**

Location: Near the NW Cor of Sec 6 T97N R9W.

Designation: WINNESHIEK COUNTY GPS CONTROL PT 2003-148

Monument Type: 5/8" dia driven aluminum rod with a 2-1/2" dia aluminum cap and permanent magnet encased in a 5" dia PVC pipe with an aluminum access cover.



This document was prepared by DCI on February 7, 2014 for use by Winneshiek County, Iowa