

**2014 Winneshiek County, Iowa**  
Horizontal Datum: **NAD 83(2011)** - Vertical Datum: **NAVD 1988**  
Iowa North Zone (1401)  
Iowa Regional Coordinate System Zone 2 Mason City  
US Survey Feet

Point Name: **10149**

NAD 83(2011)      Latitude: **N43°15'19.59131"**      Longitude: **W91°54'11.57678"**

NAVD 88 Ortho Height: **1122.090sft**      Ellip. Ht: **1022.925sft**      **Geoid12A**

Mapping Angle: **1°04'56"**      Combination Scale Factor: **0.9999491639**

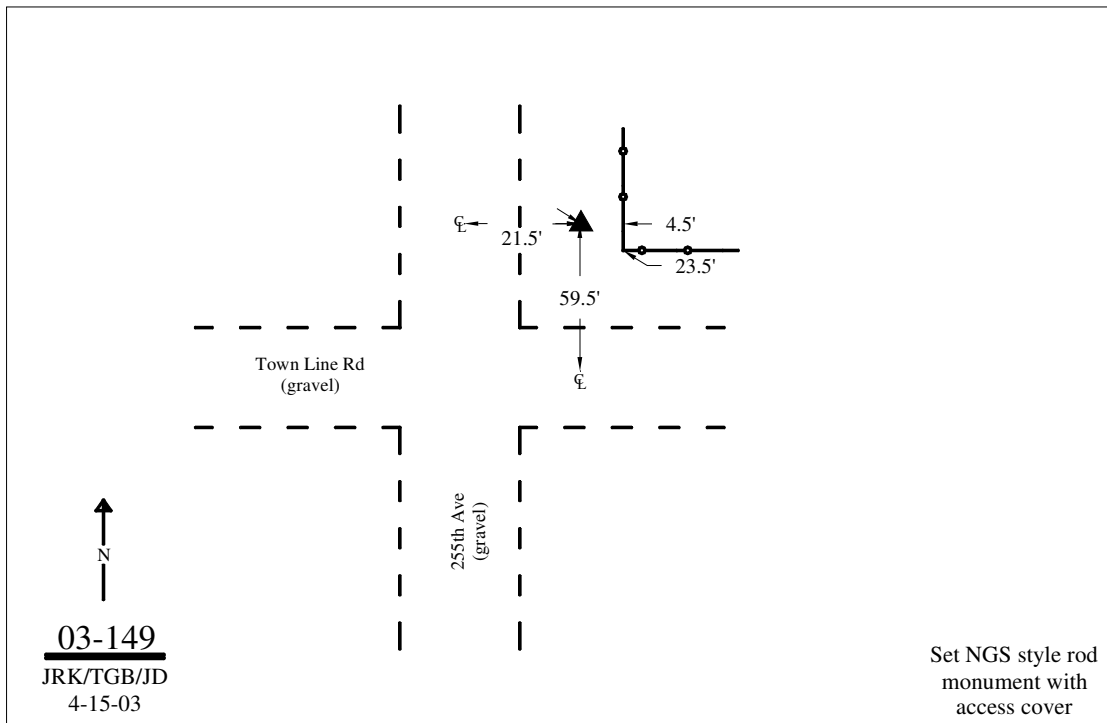
Iowa North Zone (1401)      Northing: **3924596.842sft**      Easting: **5346625.431sft**

IaRCS Zone 2      Northing: **9833499.659sft**      Easting: **12725599.134sft**

**Location:** Near the SW Cor of Sec 34 T98N R9W.

**Designation:** WINNESHIEK COUNTY GPS CONTROL PT 2003-149

**Monument Type:** 5/8" dia driven aluminum rod with a 2-1/2" dia aluminum cap and permanent magnet encased in a 5" dia PVC pipe with an aluminum access cover.



*This document was prepared by DCI on February 7, 2014 for use by Winneshiek County, Iowa*