

**2014 Winneshiek County, Iowa**  
Horizontal Datum: **NAD 83(2011)** - Vertical Datum: **NAVD 1988**  
Iowa North Zone (1401)  
Iowa Regional Coordinate System Zone 2 Mason City  
US Survey Feet

Point Name: **10151**

NAD 83(2011)      Latitude: **N43°15'07.15639"**      Longitude: **W91°46'55.68434"**

NAVD 88 Ortho Height: **1134.700sft**      Ellip. Ht: **1035.738sft**      **Geoid12A**

Mapping Angle: **1°09'51"**      Combination Scale Factor: **0.9999479352**

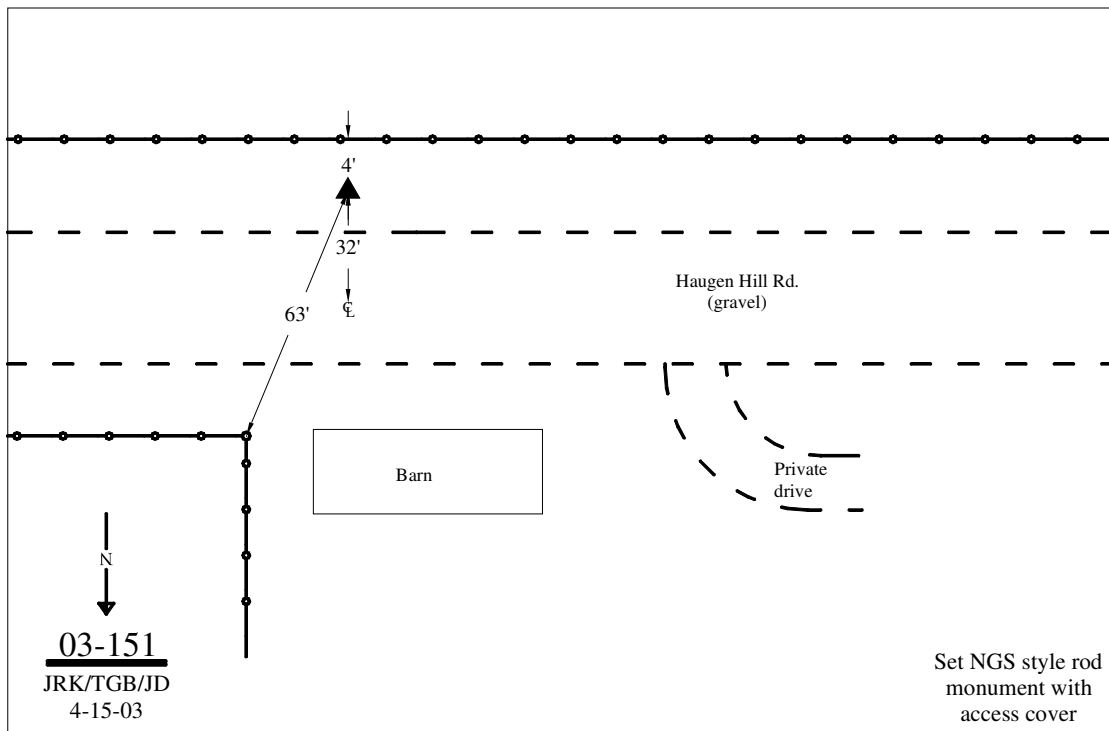
Iowa North Zone (1401)      Northing: **3923970.436sft**      Easting: **5378902.173sft**

IaRCS Zone 2      Northing: **9832590.150sft**      Easting: **12757870.641sft**

**Location:** In the NW 1/4 of Sec 3 T97N R8W.

**Designation:** WINNESHIEK COUNTY GPS CONTROL PT 2003-151

**Monument Type:** 5/8" dia driven aluminum rod with a 2-1/2" dia aluminum cap and permanent magnet encased in a 5" dia PVC pipe with an aluminum access cover.



*This document was prepared by DCI on February 7, 2014 for use by Winneshiek County, Iowa*