

2014 Winneshiek County, Iowa
Horizontal Datum: **NAD 83(2011)** - Vertical Datum: **NAVD 1988**
Iowa North Zone (1401)
Iowa Regional Coordinate System Zone 2 Mason City
US Survey Feet

Point Name: **10153**

NAD 83(2011) Latitude: **N43°15'15.97749"** Longitude: **W91°39'15.79874"**

NAVD 88 Ortho Height: **1045.340sft** Ellip. Ht: **945.946sft** **Geoid12A**

Mapping Angle: **1°15'03"** Combination Scale Factor: **0.9999526567**

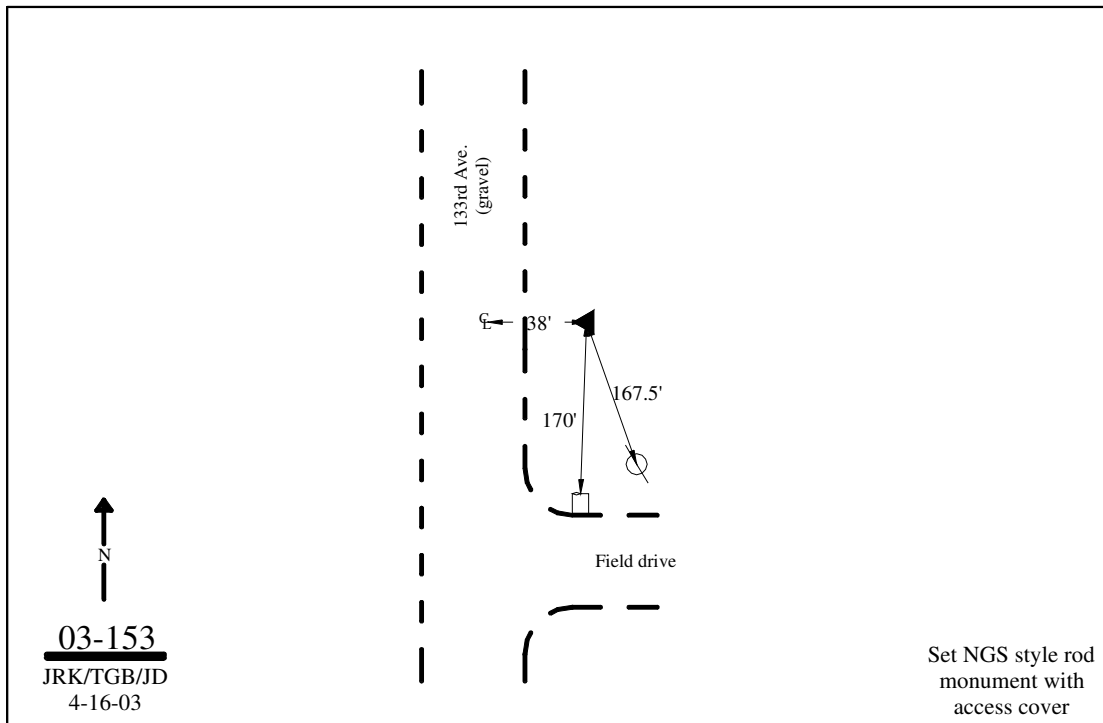
Iowa North Zone (1401) Northing: **3925580.604sft** Easting: **5412909.943sft**

IaRCS Zone 2 Northing: **9833902.522sft** Easting: **12791892.791sft**

Location: Near the N 1/4 Cor of Sec 3 T97N R7W.

Designation: WINNESHIEK COUNTY GPS CONTROL PT 2003-153

Monument Type: 5/8" dia driven aluminum rod with a 2-1/2" dia aluminum cap and permanent magnet encased in a 5" dia PVC pipe with an aluminum access cover.



This document was prepared by DCI on February 7, 2014 for use by Winneshiek County, Iowa