

2014 Winneshiek County, Iowa
Horizontal Datum: **NAD 83(2011)** - Vertical Datum: **NAVD 1988**
Iowa North Zone (1401)
Iowa Regional Coordinate System Zone 2 Mason City
US Survey Feet

Point Name: **10154**

NAD 83(2011) Latitude: **N43°12'45.92276"** Longitude: **W92°01'04.10003"**

NAVD 88 Ortho Height: **1174.980sft** Ellip. Ht: **1075.320sft** **Geoid12A**

Mapping Angle: **1°00'16"** Combination Scale Factor: **0.9999392913**

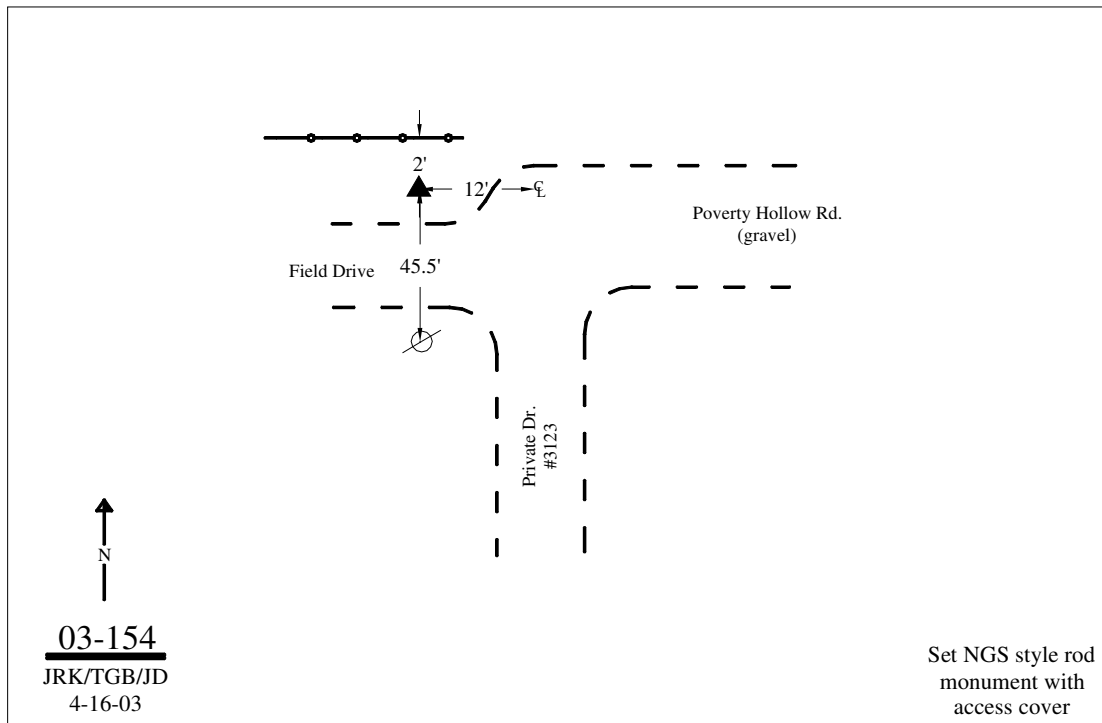
Iowa North Zone (1401) Northing: **3908484.839sft** Easting: **5316375.294sft**

IaRCS Zone 2 Northing: **9817653.200sft** Easting: **12695207.138sft**

Location: In the SW 1/4 of Sec 15 T97N R10W.

Designation: WINNESHIEK COUNTY GPS CONTROL PT 2003-154

Monument Type: 5/8" dia driven aluminum rod with a 2-1/2" dia aluminum cap and permanent magnet encased in a 5" dia PVC pipe with an aluminum access cover.



This document was prepared by DCI on February 7, 2014 for use by Winneshiek County, Iowa