

2014 Winneshiek County, Iowa
Horizontal Datum: **NAD 83(2011)** - Vertical Datum: **NAVD 1988**
Iowa North Zone (1401)
Iowa Regional Coordinate System Zone 2 Mason City
US Survey Feet

Point Name: **10155**

NAD 83(2011) Latitude: **N43°12'42.97740"** Longitude: **W91°58'14.35169"**

NAVD 88 Ortho Height: **1116.280sft** Ellip. Ht: **1016.667sft** **Geoid12A**

Mapping Angle: **1°02'11"** Combination Scale Factor: **0.9999419536**

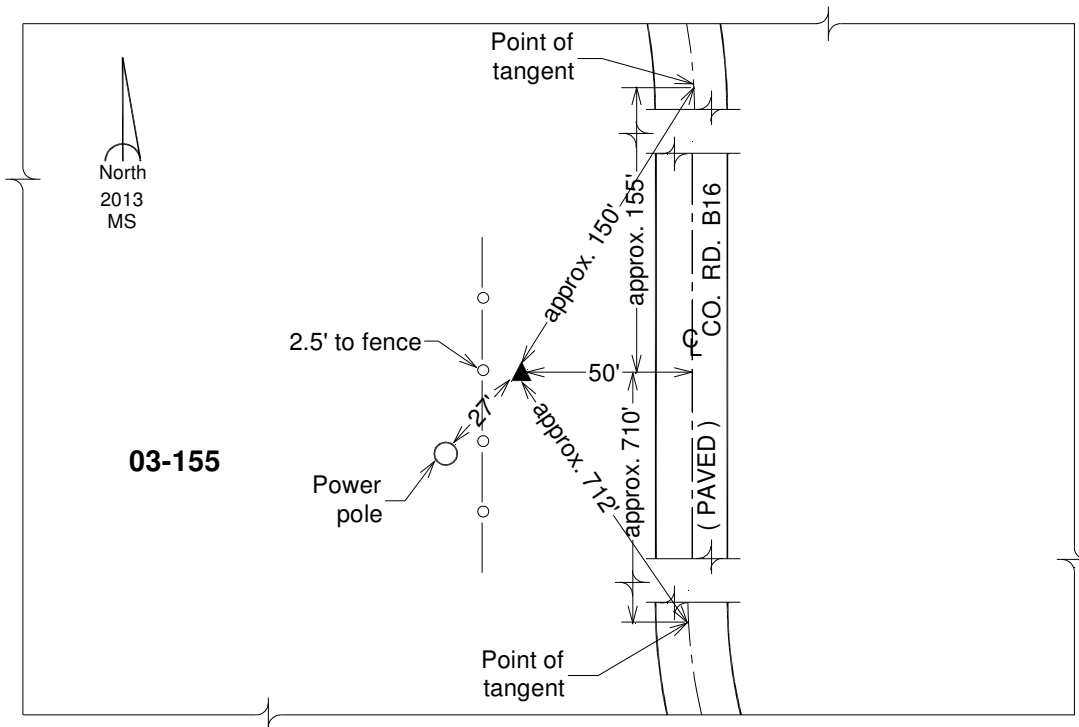
Iowa North Zone (1401) Northing: **3908410.571sft** Easting: **5328949.264sft**

IaRCS Zone 2 Northing: **9817468.432sft** Easting: **12707780.633sft**

Location: Near the N 1/4 Cor of Sec 24 T97N R10W.

Designation: WINNESHIEK COUNTY GPS CONTROL PT 2003-155

Monument Type: 5/8" dia driven aluminum rod with a 2-1/2" dia aluminum cap and permanent magnet encased in a 5" dia PVC pipe with an aluminum access cover.



This document was prepared by DCI on February 7, 2014 for use by Winneshiek County, Iowa