

2014 Winneshiek County, Iowa
Horizontal Datum: **NAD 83(2011)** - Vertical Datum: **NAVD 1988**
Iowa North Zone (1401)
Iowa Regional Coordinate System Zone 2 Mason City
US Survey Feet

Point Name: **10157**

NAD 83(2011) Latitude: **N43°12'43.99624"** Longitude: **W91°50'39.07157"**

NAVD 88 Ortho Height: **1209.290sft** Ellip. Ht: **1109.983sft** **Geoid12A**

Mapping Angle: **1°07'20"** Combination Scale Factor: **0.9999375487**

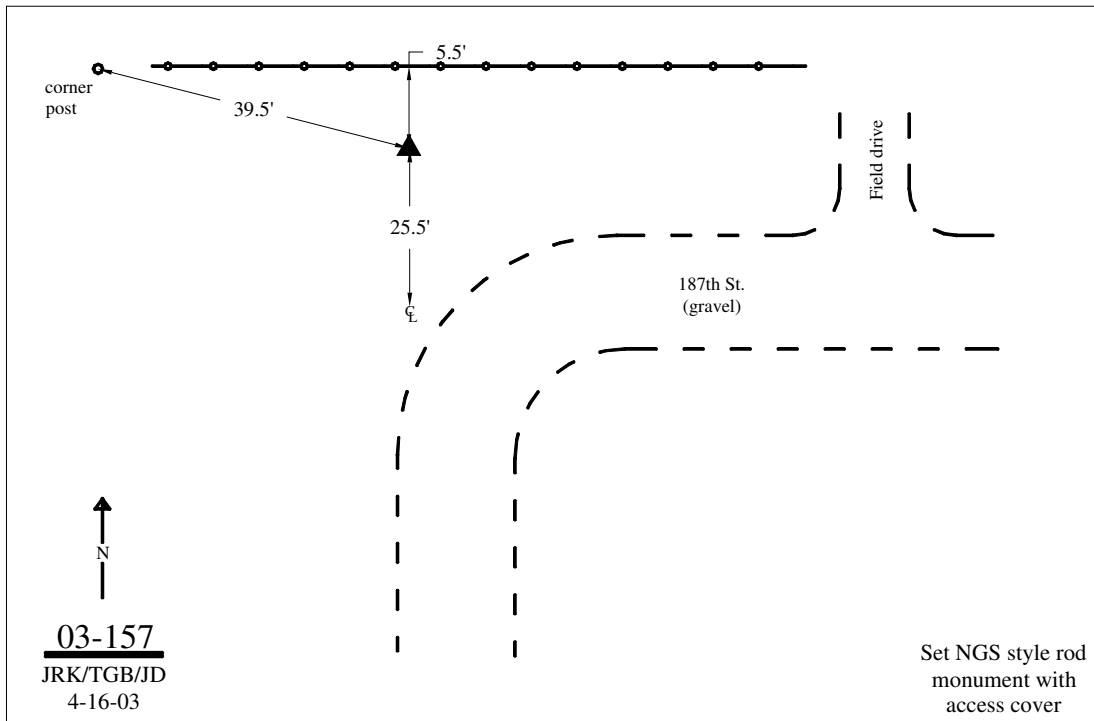
Iowa North Zone (1401) Northing: **3909148.820sft** Easting: **5362657.086sft**

IaRCS Zone 2 Northing: **9817910.798sft** Easting: **12741495.418sft**

Location: Near the SW Cor of Sec 18 T97N R8W.

Designation: WINNESHIEK COUNTY GPS CONTROL PT 2003-157

Monument Type: 5/8" dia driven aluminum rod with a 2-1/2" dia aluminum cap and permanent magnet encased in a 5" dia PVC pipe with an aluminum access cover.



This document was prepared by DCI on February 7, 2014 for use by Winneshiek County, Iowa