

2014 Winneshiek County, Iowa
Horizontal Datum: **NAD 83(2011)** - Vertical Datum: **NAVD 1988**
Iowa North Zone (1401)
Iowa Regional Coordinate System Zone 2 Mason City
US Survey Feet

Point Name: **10158**

NAD 83(2011) Latitude: **N43°12'44.97836"** Longitude: **W91°47'01.31263"**

NAVD 88 Ortho Height: **1229.140sft** Ellip. Ht: **1129.953sft** **Geoid12A**

Mapping Angle: **1°09'48"** Combination Scale Factor: **0.9999366413**

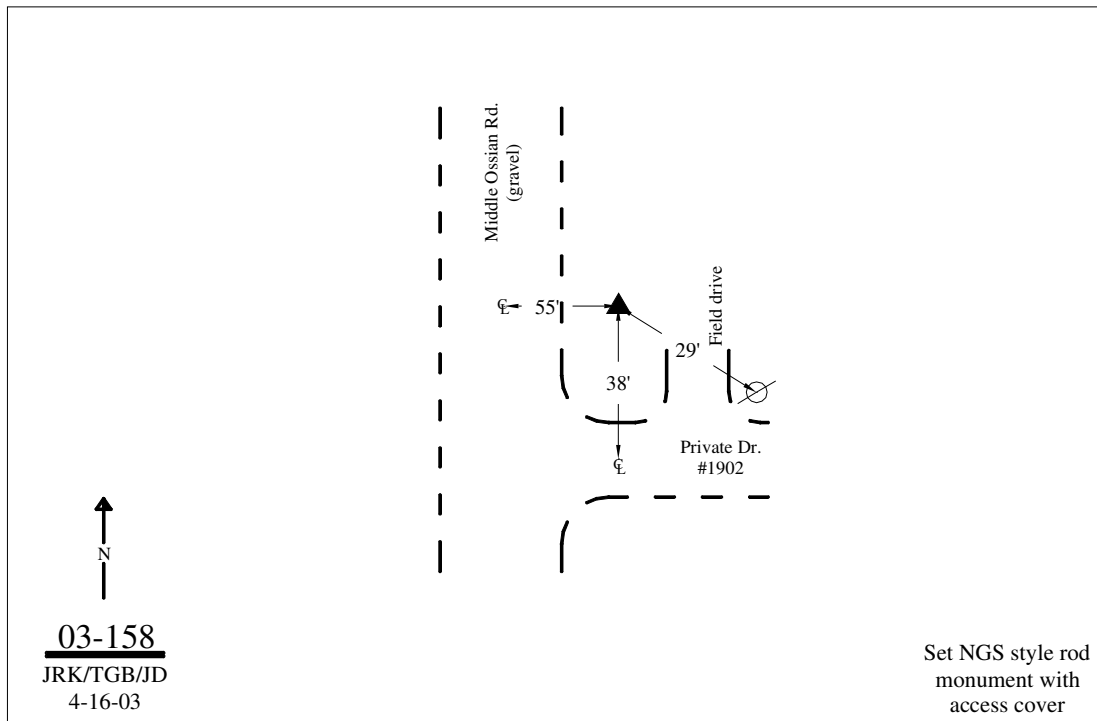
Iowa North Zone (1401) Northing: **3909569.837sft** Easting: **5378777.953sft**

IaRCS Zone 2 Northing: **9818190.476sft** Easting: **12757620.208sft**

Location: Near the SW Cor of Sec 15 T97N R8W.

Designation: WINNESHIEK COUNTY GPS CONTROL PT 2003-158

Monument Type: 5/8" dia driven aluminum rod with a 2-1/2" dia aluminum cap and permanent magnet encased in a 5" dia PVC pipe with an aluminum access cover.



This document was prepared by DCI on February 7, 2014 for use by Winneshiek County, Iowa