

2014 Winneshiek County, Iowa
Horizontal Datum: **NAD 83(2011)** - Vertical Datum: **NAVD 1988**
Iowa North Zone (1401)
Iowa Regional Coordinate System Zone 2 Mason City
US Survey Feet

Point Name: **10160**

NAD 83(2011) Latitude: **N43°12'43.49530"** Longitude: **W91°39'26.60565"**

NAVD 88 Ortho Height: **1221.610sft** Ellip. Ht: **1122.140sft** **Geoid12A**

Mapping Angle: **1°14'56"** Combination Scale Factor: **0.9999369456**

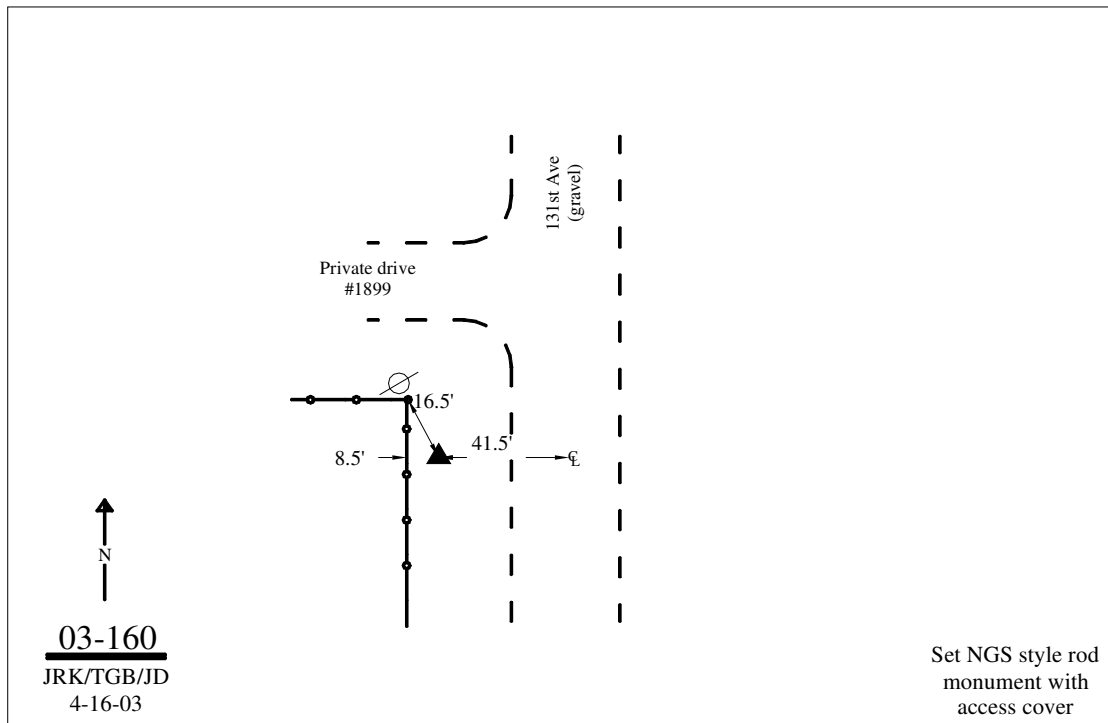
Iowa North Zone (1401) Northing: **3910128.448sft** Easting: **5412446.845sft**

IaRCS Zone 2 Northing: **9818454.243sft** Easting: **12791294.478sft**

Location: In the NW 1/4 of Sec 22 T97N R7W.

Designation: WINNESHIEK COUNTY GPS CONTROL PT 2003-160

Monument Type: 5/8" dia driven aluminum rod with a 2-1/2" dia aluminum cap and permanent magnet encased in a 5" dia PVC pipe with an aluminum access cover.



This document was prepared by DCI on February 7, 2014 for use by Winneshiek County, Iowa